

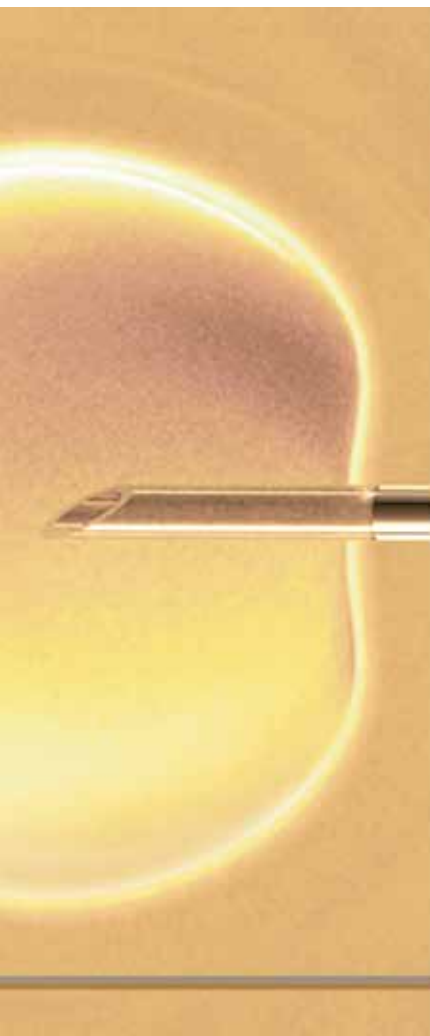
Journal of

Reproductive Medicine and Endocrinology

Special Issue 2013

– Journal für Reproduktionsmedizin und Endokrinologie –

Andrology • Embryology & Molecular Biology • Endocrinology • Ethics & Law • Genetics
Gynaecology • Contraception • Psychosomatic Medicine • Reproductive Medicine • Urology



D·I·R ANNUAL 2012



D·I·R
DEUTSCHES IVF REGISTER

Member of the



Official Organ: AGRBM, BRZ, DVR, DGA, DGGEF, DGRM, DIR, EFA, OEGRM, SRBM/DGE

D·I·R ANNUAL 2012



D·I·R
DEUTSCHES IVF REGISTER



Table of Contents

Preface	6
Authors	8
General Survey of Medically Assisted Reproduction Treatments (ART) in Germany	
Outcome of ART 2012	9
Registry Participants 1982 – 2012	9
Total Number of Treatment Cycles 2012	10
Number of Ovum Pick-ups (OPU) 1982 – 2012	10
Number of Treatment Cycles 1982 – 2012	11
Summary of Statistics in Brief 2012 – CoD Nov 7 2013	11
D-I-R Statistics in Brief 2012 – CoD Nov 7 2013	12
D-I-R Statistics in Brief 2011 – CoD Nov 7 2013	13
Clinical Pregnancies (CP), Miscarriages (MISC), Ectopic Pregnancies (EP), and Still Births (SB) 2011	14
Multiple Births 2011	15
Births as a Function of Number of Embryos Transferred and Age Groups 2000 – 2011	16
Births as a Function of Number of Embryos Transferred 2000 – 2011	17
Fertilisation Rate 2012	18
Distribution of Indications 2012	19
Outcome for IVF, ICSI and Cryo Transfers	
IVF and ICSI – Results 2012	20
TESE and Cryo Transfer – Results 2012	21

Outcome as a Function of Female Age 2012 – IVF	22
Outcome as a Function of Female Age 2012 – ICSI	23
Clinical Pregnancies (CP)/ET as a Function of the Number of Embryos Transferred and Age Groups 2012	24
Clinical Pregnancies (CP)/Fresh Transfer as a Function of Embryo Quality 2012	25
Clinical Pregnancies (CP)/Frozen Transfer as a Function of Embryo Quality 2012	25
Miscarriage (MISC) Rates as a Function of Female Age and Number of Embryos Transferred 2012	26
Clinical Pregnancy Rate (CPR) as a Function of the Stimulation Protocol 2012	27
Mean Age for Women and Men 1997 – 2012	28
Duration of Unwanted Childlessness Prior to First Treatment 1997 – 2012	29
Number of Treatment Cycles per Woman 1997 – 2012	29
Children Born	
Children Born 1997 – 2012	30
Children as a Function of Week of Gestation (WoG) and Birth Weight (BW) 2011	32
Ovarian Hyperstimulation Syndrome and Complications	
Complications as a Function of Ovum Pick-up (OPU) 2012	34
Ovarian Hyperstimulation Syndrome (OHSS) as a Function of the Stimulation Protocol 2012	35
List of D·I·R Registry Participants 2012	36
Sponsors	43
Editorial Board	44
Imprint	45

D·I·R– Annual 2012

K Bühler*, U Czeromin, JS Krüssel, V Blumenauer, K Fiedler, C Gnoth, L Happel, M Kupka, A Tandler-Schneider



Starting with the 2009-Annual, the German IVF Registry has published its yearbook also in English. It is our great pleasure to now present the 2012-Annual as a modified reprint of the German D·I·R Yearbook that was published already in December 2013. The preparation of the 2012 English edition had to tackle major challenges. After the long-standing cooperation had been terminated by the Regional Medical Chamber of Schleswig-Holstein, the registry, under great time pressure, managed to establish the alternative data management with Weise & Associates consulting & technology GmbH, Düsseldorf.

Due to the cancellation by the Medical Chamber, participation in the registry is no longer mandatory. Yet, of the 128 German IVF centers (2012) 120 had exported their data, cycle by cycle, into the D·I·R registry: 80,467 cycles were documented, i.e. an average of 671 cycles per center. In 2011, the centers had documented an average of 632 cycles per center. Because of major changes in the reimbursement regulations in 2004, compared with 2003 a decrease of 45% occurred. Since then, the numbers have increased steadily again – by a total of 23% within the past 9 years. Over all the years, an increase in the pregnancy rate (PR) has been achieved. In 2012, the PR/ET after the IVF treatments was 30.4%, 29.0% after ICSI, and after "Cryo transfer" (frozen-thawed transfer, mostly in the 2-PN stage) 21.1%. These data demonstrate the high quality of reproductive medicine in Germany, arriving at impressive results despite the restrictive legislation: in accordance with the „Embryo Protection Act“ of 1990, embryo selection and thus the elective single embryo transfer (eSET) are forbidden in Germany. Egg donation is prohibited as well. Cryopreservation is allowed but usually only of 2-PN stage oocytes. Yet the regulation that only a maximum of three embryos may be transferred has certainly led to positive effects. Due to the increasing quality of stimulation, improved oocyte treatment and changes in transfer technology, the number of transferred embryos has decreased 20% in fresh cycles since 1997. In 2012, an average of 1.84 to 1.86 embryos were transferred in fresh cycles. This responsible approach of both patients and doctors for reproductive medicine has led to a 80% reduction of the proportion of triplets and the total number of children born after ART during this time. Certainly, this development is among the Registry's many merits and it will continue to vigorously pursue and support quality assurance of reproductive medicine in Germany.

Although data export to the German IVF Registry is no longer mandatory, the registry will continue to provide each center with a wealth of data, thus enabling each center to evaluate its position among the registry participants as a whole. Thus, each center is encouraged to examine its data self-critically and evaluate its results.

Every new beginning also bears a special charm and offers the opportunity for change: the yearbook's layout was significantly modernized and its graphical appearance implemented by state-of-the art possibilities.

The great advantage of the German IVF Registry is the electronic data collection for each initiated treatment cycle since 1996. Meanwhile, more than 1.2 million ART cycles have been documented in the D·I·R database. The prospective documentation as well as the cycle by cycle data collection are of particular value. We gratefully acknowledge that the changed situation has not kept the vast majority of German centers from continuing their participation in this world-wide recognized registry, has not kept them from supplying their predominantly prospective data at their own expense: since 1997 they have spent more than 2.1 million Euros for THEIR project, the German IVF Registry.

**On March 1 2014, Dr. Klaus Bühler resigned from his position as President of the Board. We are grateful for the many years of hard work and emotional concern for the IVF-Registry. He is followed by Dr. Ute Czeromin as President. Dr. med. Andreas Tandler-Schneider accepted the call to fill the vacant board position.*

1) D·I·R Jahrbuch 2012 | Reproduktionsmed Endokrinol 2013.10 (Special Issue 2)

Acknowledgements

Our thanks go to all the physicians, embryologists and other members of the medical staff for their diligence in collecting the data since the very beginning in 1982. They provide the foundation for the success and the world-wide high acclaim of this registry. Our gratitude also goes to the team of Weise & Associates and Markus Kimmel for rebuilding the new data base and performing the statistical evaluation of all the data in such a short period of time. We sincerely thank all of those assisting us in publishing the English version of the yearbook again, especially Monika Uszkoreit and Dipl. Des. Soo-Hee Kim.



Dr. med. Ute Czeromin



Dr. med. K. Bühler



Prof. Dr. med. Jan Krüssel

Responsible for this Edition



Deutsches IVF-Register e. V.
German IVF Registry

President (until March 1 2014)

Dr. med. K. Bühler

Members of the Board

Dr. med. K. Bühler

Dr. med. U. Czeromin

Prof. Dr. med. J.-S. Krüssel

Curators

Dipl.-Biol. V. Blumenauer

Dr. med. K. Fiedler

PD Dr. med. C. Gnoth

Prof. Dr. med. M. Kupka

Dr. med. A. Tandler-Schneider

Co-opted Member: Dr. med. L. Happel

Past Presidents

Prof. Dr. med. R. Felberbaum (1995–2007)

Prof. Dr. med. H.-K. Rjosk (1992–1995)

Prof. Dr. med. F. Lehmann (1982–1992)

D-I-R-Data Management

W&A – Weise & Associates consulting & technology GmbH

Fon +49 211 522948 - 10

Fax +49 211 522948 - 11

E-Mail info@weise-associates.de

Web: www.weise-associates.de

Contact: Stefan Fitzthum, Manager Customer Care
and Markus Kimmel, Kimmelnet

Mobile: +49 157 383 261 93

E-Mail: mmk@kimmelnet.de

Web: www.kimmelnet.de

Design and Layout

a.umi design etc.

Dipl.-Des. Soo-Hee Kim

Fon +49 176 1250 6007

E-Mail mail@a-umi.com

D-I-R Office

Monika Uszkoreit · MRU-Consulting GbR

Torstraße 140 · 10119 Berlin

Fon +49 30 39 800 743 · E-Mail: d.i.r.geschaeftsstelle@mru-consulting.de

www.deutsches-ivf-register.de

Copyright D-I-R Deutsches IVF-Register© 2013

Outcome of ART 2012

Centers for IVF-, ICSI-, and Cryo Transfer Treatments



Members of the German IVF-Registry 2012

n = 128

Registry Participants 2012

n = 120

Data Received by Deadline Nov 7 2013

n = 80,467 (100.00 %)

Plausible

n = 77,378 (96.16 %)

Prospective (all Cycles)

n = 65,363 (84.47 %)

Prospective (IVF, ICSI, IVF/ICSI)

n = 41,528 (81.48 %)

Number of Women Treated*

n = 47,807

Mean Number of Treatment Cycles per Woman

1.68

Registry Participants 1982 – 2012

IVF-, ICSI- and Cryo Transfer Treatments



	1982	1986	1990	[...]	2002	2003	2004	2005	2006	2007	2008	2009	2010	2011	2012
IVF	5	28	53	<i>For values from 1991 to 2011 see www.deutsches-ivf-register.de</i>	112	114	118	117	120	118	117	119	121	124	117
ICSI	0	0	0		112	116	120	117	120	118	120	119	124	128	120
Cryo	0	0	0		97	101	112	109	109	112	112	117	120	125	119
Total	5	28	53		112	116	120	117	121	118	120	121	124	128	120**

*) Base quantity: Total number of women, including implausible treatment cycles

***) 8 Members did not export their 2012 data

Total Number of Treatment Cycles 2012



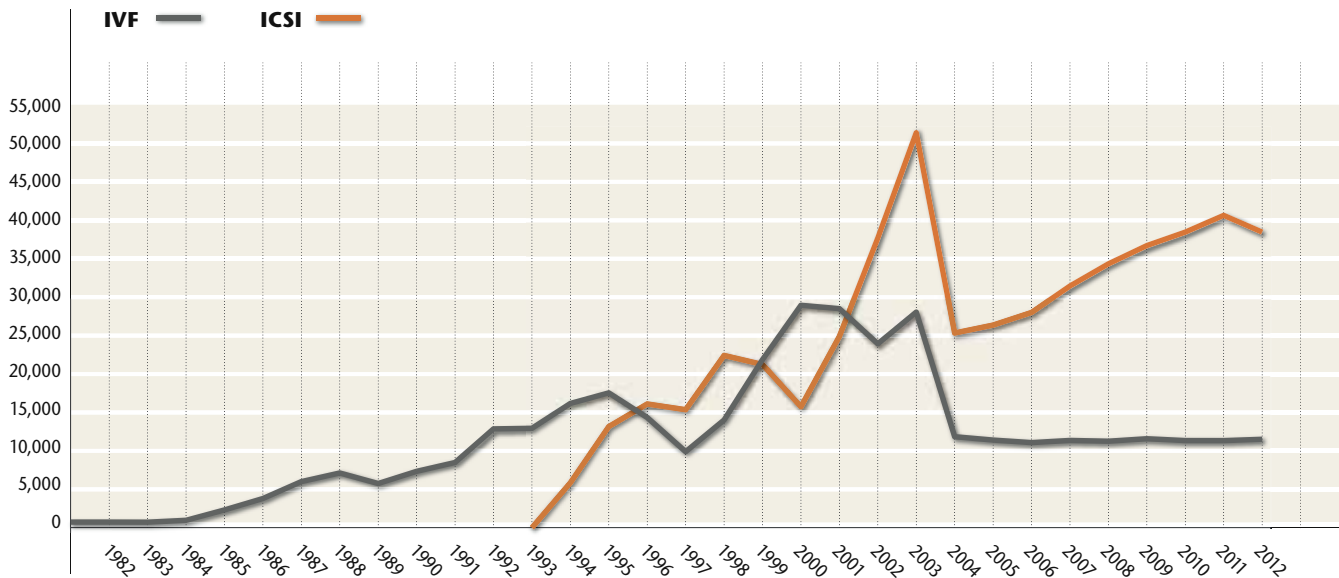
IVF, ICSI, IVF/ICSI, Cryo Transfer – Prospective Data

	IVF	ICSI	IVF/ICSI	Cryo Transfer	No Treatment	Total
n	9,237	31,430	860	17,527	6,309	65,363
%	14.13	48.09	1.32	26.81	9.65	100.00

Number of Ovum Pick-ups Cycles (OPU) 1982–2012



IVF, ICSI* – Prospective and Retrospective Data



	1982	1986	1990	[...]	2002	2003	2004	2005	2006	2007	2008	2009	2010	2011	2012***
IVF	742	3,806	7,343	For values from 1991 to 2011 see www.deutsches-ivf-register.de	23,936	28,058	11,848	11,410	11,082	11,362	11,264	11,585	11,346	11,341	11,512
ICSI					37,692	51,389	25,339	26,370	28,015	31,452	34,333	36,712	38,463	40,641	38,462
Total**	742	3,806	7,343		62,306	80,434	37,633	38,382	39,769	43,612	46,431	49,170	50,798	53,076	50,968

*) OPU leading to an IVF- and/or ICSI oocyte treatment
 **) In each case, "Total" also contains values for IVF/ICSI. For 2012 e.g. 994 OPU
 ***) Based upon the 120 participating centers

Number of Treatment 1982–2012

IVF, ICSI, IVF/ICSI, Cryo Transfer – Plausible Data

	1982	1986	1990	[...]	2002	2003	2004	2005	2006	2007	2008	2009	2010	2011	2012***
IVF	742	3,806	7,343	<i>For values from 1991 to 2011 see www.deutsches-ivf-register.de</i>	23,936	28,058	11,848	11,098	11,082	11,362	11,264	11,585	11,346	11,341	11,512
ICSI					37,692	51,389	25,339	25,532	28,015	31,452	34,333	36,712	38,463	40,641	38,462
IVF/ICSI					678	987	446	590	672	798	834	873	989	1,094	995
Cryo					14,923	14,265	16,883	14,471	14,926	16,566	17,646	17,866	17,969	19,228	19,074
None*					9,802	11,133	4,928	4,539	4,600	5,137	5,825	5,946	6,289	6,618	7,335
Total**	742	4,201	8,653		87,044	105,854	59,448	56,232	59,295	65,316	69,902	72,984	76,072	78,922	77,378

From 1999 on each initiated cycle is documented.

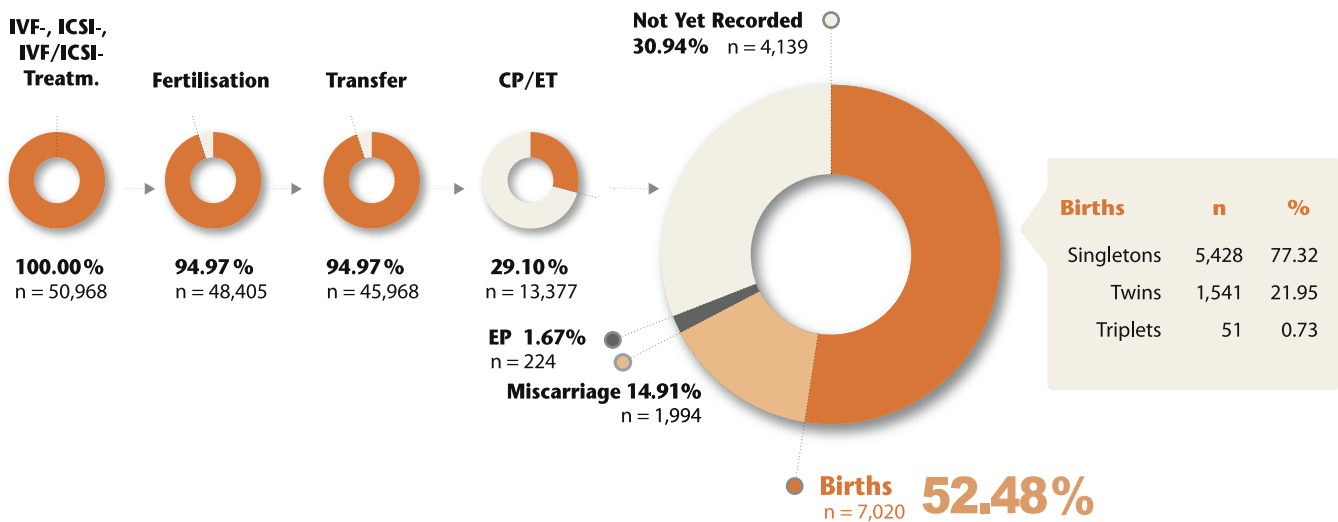
*) No treatment: treatments aborted prior to oocyte culture

**) "Total" may contain GIFT cases. Documentation has been neglected since 2005 due to lack of statistical relevance

***) Based upon the 120 participating centers

Summary of Statistics in Brief 2012 – CoD Nov 7 2013

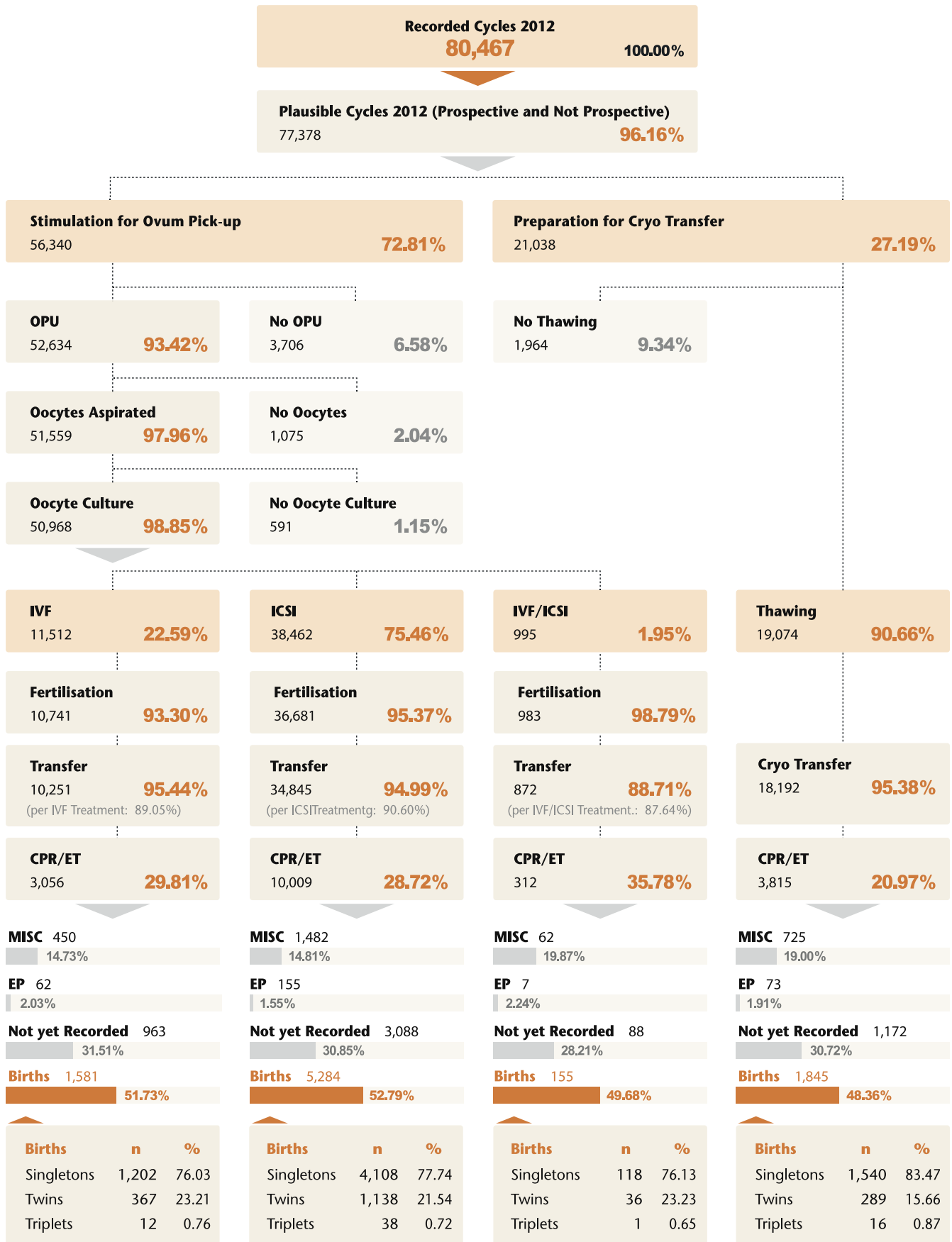
IVF, ICSI and IVF/ICSI – Prospective and Retrospective Data



D·I·R Statistics in Brief – CoD Nov 7 2013



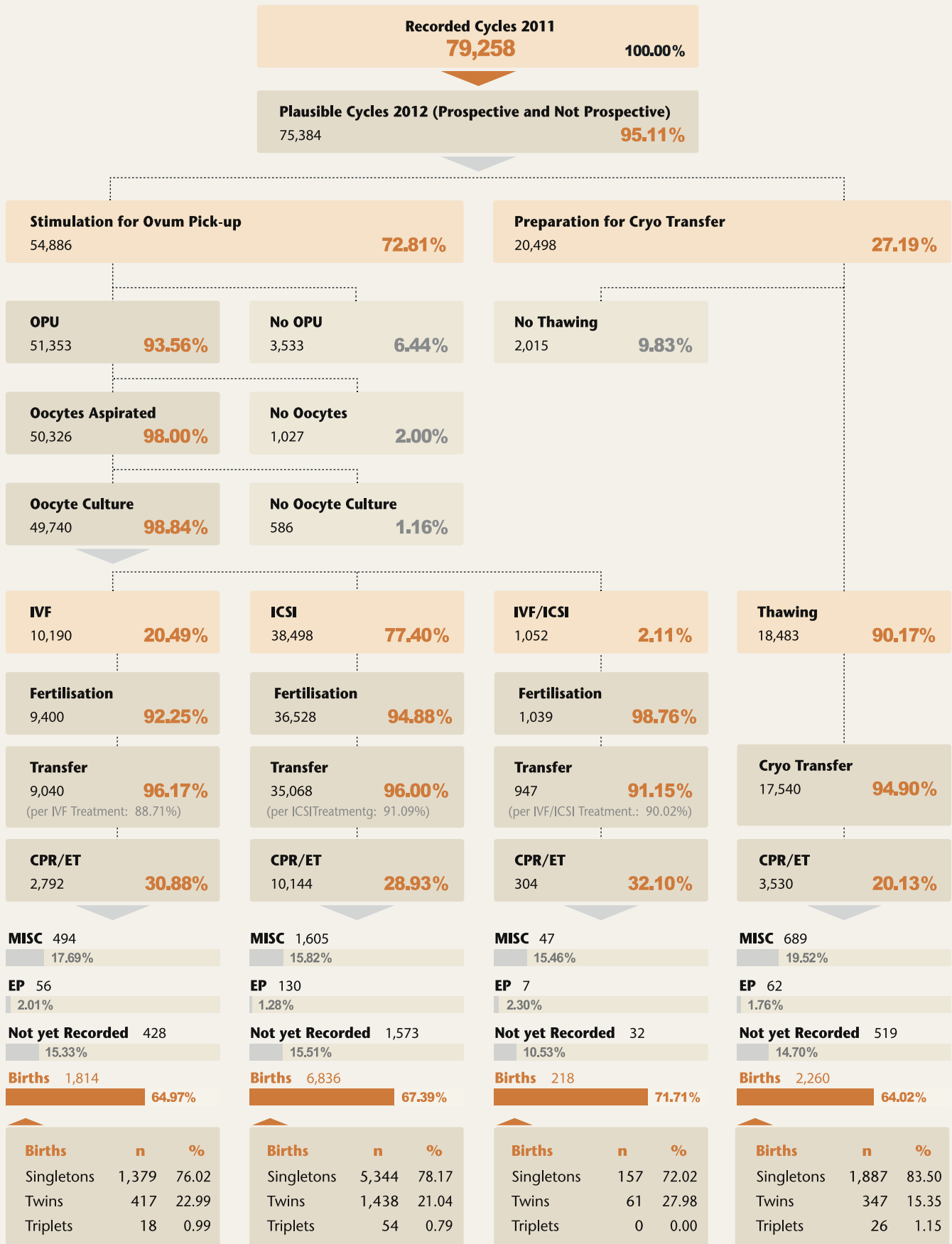
German IVF Registry



D·I·R Statistics in Brief 2011 – CoD Nov 7 2013



German IVF Registry (Based upon Registry Participants 2012)



Clinical Pregnancies (CP), Miscarriages (MISC), Ectopic Pregnancies (EP), and Still Births (SB) 2011

Prospective and Retrospective Data (Based upon Registry Participants 2012)

Birth Rate/Transfer for patients with 2 embryos transferred and a surplus of at least 2 PN-stage embryos: IVF 23.97%, ICSI 22.58%, IVF/ICSI 25.26%

	IVF		ICSI		IVF/ICSI		Cryo Transfer	
	n	%	n	%	n	%	n	%
Treatment Cycles	10,190		38,498		1,052		18,483	
Clinical Pregnancies	2,792	100.00	10,144	100.00	304	100.00	3,530	100.00
No Information	428	15.33	1,573	15.51	32	10.53	519	14.70
Births	1,814	64.97	6,836	67.39	218	71.71	2,260	64.02
Miscarriages	494	17.69	1,605	15.82	47	15.46	689	19.52
Induced Abort. + Fetal Reduc.*	38 (45)	1.36	150 (168)	1.48	4 (4)	1.32	25 (26)	0.71
Ectopic Pregnancies	56	2.01	130	1.28	7	2.30	62	1.76
Children	2,267		8,382		279		2,659	
Still Births**	20	0.88	63	0.75	3	1.08	18	0.68
Malformations	14	0.62	75	0.89	3	1.08	17	0.64
Baby-Take-Home-Rate***		17.80		17.76		20.72		12.23
		18.58 ¹		18.51 ¹		21.37 ¹		12.58 ¹
		20.53 ²		20.51 ²		22.90 ²		14.03 ²

*) Number of cycles in which an induced abortion was documented. A more detailed differentiation cannot be supplied at this time.
The brackets contain the number of embryos

**) Number of still births in relation to the number of children born

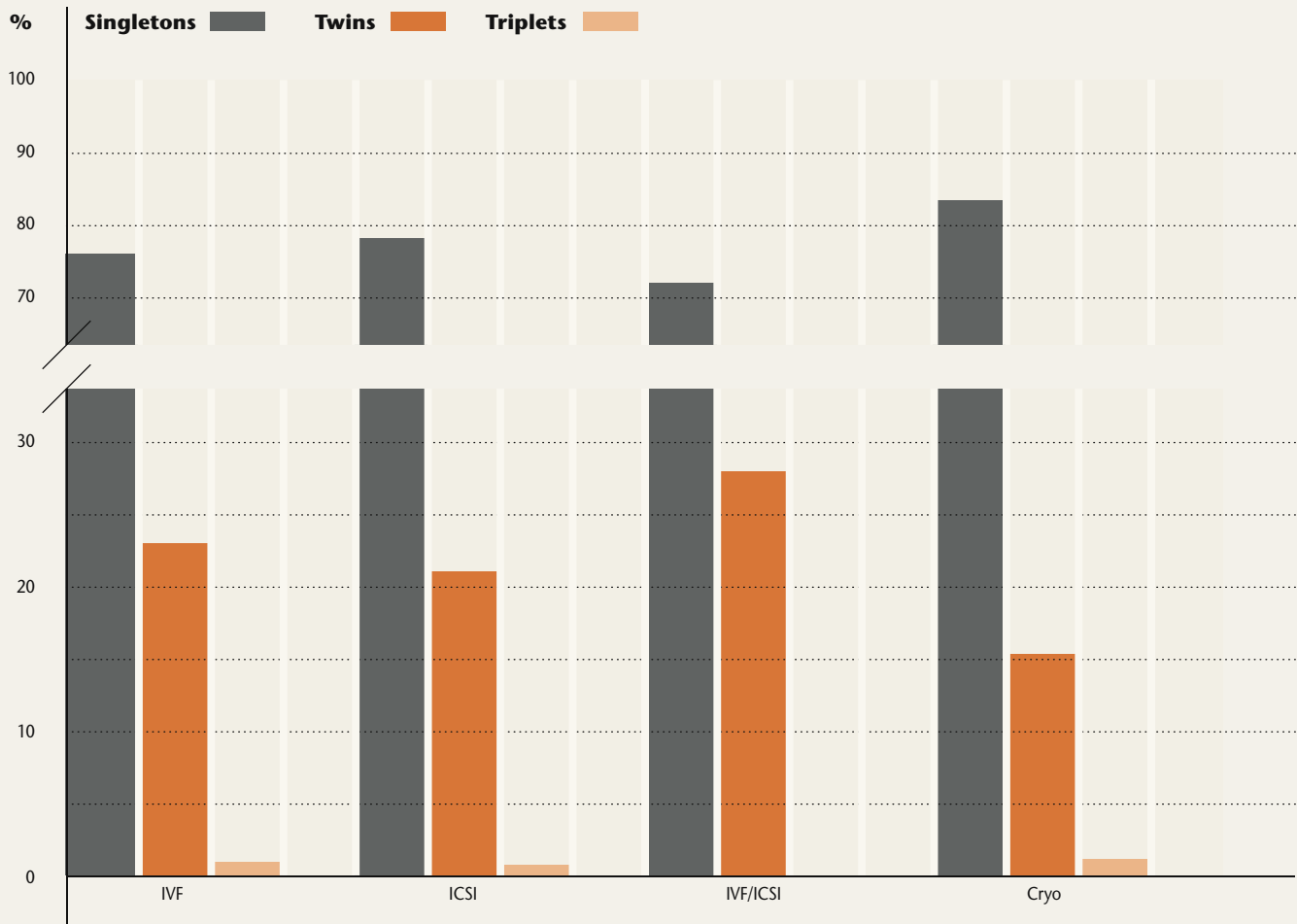
**) Percentage of births per number of treatments

¹) Total cycles reduced by the number of cycles with unknown pregnancy outcome

²) For cycles with unknown pregnancy outcome, the probable birth rate (births/pregnancy) was calculated and added to the number of known births

Multiple Births 2011

Prospective and Retrospective Data (Based upon Registry Participants 2012)



	IVF			ICSI			IVF/ICSI			Cryo Transfer		
	n	%	%	n	%	%	n	%	%	n	%	%
CP/ET	2,792	100.00		10,144	100.00		304	100.00		3,530	100.00	
Births	1,814	64.97	100.00	6,836	67.39	100.00	218	71.71	100.00	2,260	64.02	100.00
Singletons	1,379	49.39	76.02	5,344	52.68	78.17	157	51.64	72.02	1,887	53.46	83.50
Twins	417	14.94	22.99	1,438	14.18	21.04	61	20.07	27.98	347	9.83	15.35
Triplets	18	0.64	0.99	54	0.53	0.79	0	-	-	26	0.74	1.15
Quadruplets	0	-	-	0	-	-	0	-	-	0	-	-
No Information	428	15.33		1,573	15.51		32	10.53		519	14.70	
Miscarriages	494	17.69		1,605	15.82		47	15.46		689	19.52	
EPs	56	2.01		130	1.28		7	2.30		62	1.76	

Births as a Function of Number of Embryos Transferred and Age Groups 2000 – 2011

IVF, ICSI, IVF/ICSI, Cryo Transfer – Prospective and Retrospective Data
(Based upon Registry Participants 2012)

Woman's Age in Years		Singletons		Twins		Triplets		Quadruplets		Total
		n	%	n	%	n	%	n	%	
<= 24	1 Embryo	132	100.00	0	-	0	-	0	-	132
	2 Embryos	1,559	76.76	463	22.80	9	0.44	0	-	2,031
	3 Embryos	269	67.76	106	26.70	20	5.04	2	0.50	397
	Total	1,960	76.56	569	22.23	29	1.13	2	0.08	2,560
25 – 29	1 Embryo	1,315	95.50	60	4.36	2	0.15	0	-	1,377
	2 Embryos	14,639	75.71	4,610	23.84	84	0.43	2	0.01	19,335
	3 Embryos	2,601	68.75	966	25.54	213	5.63	3	0.08	3,783
	Total	18,555	75.75	5,636	23.01	299	1.22	5	0.02	24,495
30 – 34	1 Embryo	3,196	96.09	127	3.82	3	0.09	0	-	3,326
	2 Embryos	29,920	77.64	8,457	21.94	161	0.42	1	0.00	38,539
	3 Embryos	7,355	70.82	2,614	25.17	410	3.95	6	0.06	10,385
	Total	40,471	77.46	11,198	21.43	574	1.10	7	0.01	52,250
35 – 39	1 Embryo	3,367	96.15	131	3.74	4	0.11	0	-	3,502
	2 Embryos	21,757	83.30	4,291	16.43	69	0.26	1	0.00	26,118
	3 Embryos	9,882	76.80	2,694	20.94	289	2.25	2	0.02	12,867
	Total	35,006	82.39	7,116	16.75	362	0.85	3	0.01	42,487
>= 40	1 Embryo	703	95.78	31	4.22	0	-	0	-	734
	2 Embryos	2,540	91.33	235	8.45	5	0.18	1	0.04	2,781
	3 Embryos	2,401	87.06	343	12.44	14	0.51	0	-	2,758
	Total	5,644	89.97	609	9.71	19	0.30	1	0.02	6,273

Total number of births 2000 – 2011: 128,065

Births as a Function of Number of Embryos Transferred 2000 – 2011

Prospective and Retrospective Data

IVF

	Singletons		Twins		Triplets		Quadruplets		Total
	n	%	n	%	n	%	n	%	
1 Embryo	1,867	98.47	29	1.53	0	-	0	-	1,896
2 Embryos	17,557	76.73	5,237	22.89	87	0.38	1	0.00	22,882
3 Embryos	5,809	71.42	1,963	24.13	356	4.38	6	0.07	8,134
Total	25,233	76.67	7,229	21.96	443	1.35	7	0.02	32,912

ICSI

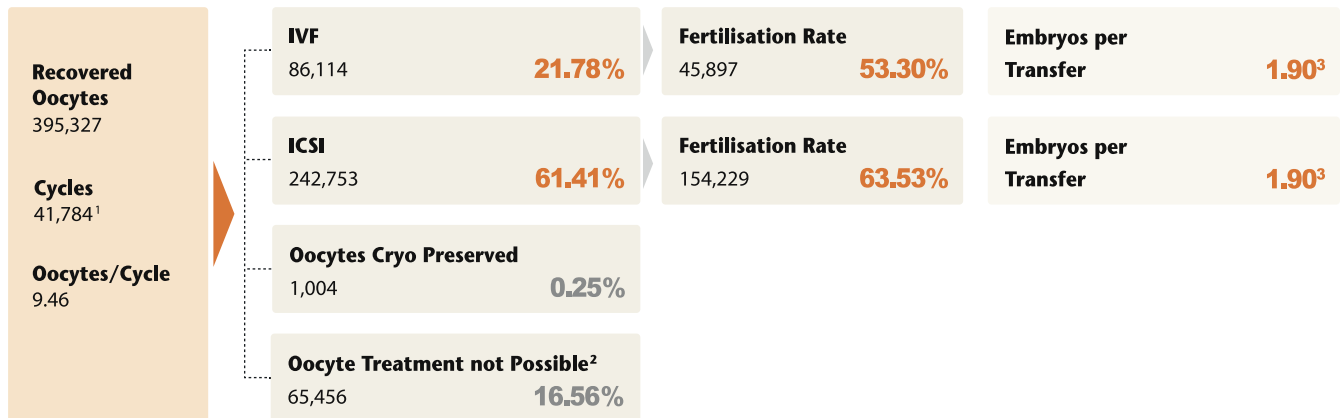
	Singletons		Twins		Triplets		Quadruplets		Total
	n	%	n	%	n	%	n	%	
1 Embryo	3,700	98.56	54	1.44	0	-	0	-	3,754
2 Embryos	41,176	79.26	10,597	20.40	176	0.34	3	0.01	51,952
3 Embryos	11,957	74.75	3,555	22.22	479	2.99	6	0.04	15,997
Total	56,833	79.26	14,206	19.81	655	0.91	9	0.01	71,703

Cryo Transfer

	Singletons		Twins		Triplets		Quadruplets		Total
	n	%	n	%	n	%	n	%	
1 Embryo	1,834	97.55	46	2.45	0	-	0	-	1,880
2 Embryos	11,559	86.28	1,787	13.34	51	0.38	0	-	13,397
3 Embryos	4,339	77.06	1,180	20.96	111	1.97	1	0.02	5,631
Total	17,732	84.81	3,013	14.41	162	0.77	1	0.00	20,908

Fertilisation Rate 2012

IVF and ICSI – Prospective Data



Embryos per Transfer³ and Children After IVF, ICSI 1997 – 2012 Prospective and non-prospective Data

		1997	2000	2001	2002	2003	2004	2005	2006	2007	2008	2009	2010	2011	2012*
IVF	Embryos Transf.	2.49	2.29	2.25	2.19	2.17	2.15	2.11	2.08	2.08	2.06	2.03	2.01	1.99	1.84
	Children/Transf.	0.21	0.23	0.24	0.22	0.23	0.23	0.24	0.25	0.25	0.24	0.24	0.22	0.15	0.19
	Children/Deliv.	1.31	1.28	1.27	1.26	1.26	1.25	1.23	1.23	1.24	1.24	1.22	1.24	1.26	1.25
ICSI	Embryos Transf.	2.56	2.39	2.3	2.21	2.17	2.15	2.11	2.09	2.08	2.08	2.06	2.05	2.02	1.86
	Children/Transf.	0.22	0.23	0.24	0.22	0.23	0.23	0.24	0.24	0.24	0.23	0.23	0.22	0.15	0.19
	Children/Deliv.	1.29	1.26	1.23	1.23	1.23	1.22	1.22	1.20	1.21	1.22	1.21	1.21	1.22	1.23
Cryo-Transfer	Embryos Transf.	2.34	2.25	2.20	2.14	2.12	2.14	2.10	2.10	2.07	2.07	2.05	2.04	2.02	1.92
	Children/Transf.	0.10	0.12	0.12	0.12	0.12	0.12	0.14	0.14	0.14	0.14	0.14	0.14	0.10	0.12
	Children/Deliv.	1.14	1.16	1.16	1.16	1.16	1.17	1.16	1.16	1.16	1.15	1.16	1.16	1.18	1.17

1) In 182 cases no IVF- or ICSI treatment was performed. 74 are cases in which oocytes were recovered but nevertheless a cryo transfer was performed

2) Reason: e.g. immature oocytes or no sperm available

3) Mean

*) Based on the 120 participating centers

Distribution of Indications 2012

IVF and ICSI – Prospective Data

IVF

Male Factor ▶	Normal		Reduced Semen Quality		Other**		Total	
Female Factor ▼	n	%	n	%	n	%	n	%
Normal	1,095	11.85	559	6.05	778	8.42	2,432	26.33
Tubal Pathology	1,254	13.58	352	3.81	473	5.12	2,079	22.51
Endometriosis	525	5.68	168	1.82	324	3.51	1,017	11.01
Hyperandrog./PCO	259	2.80	113	1.22	109	1.18	481	5.21
Ovulatory Dysf.	352	3.81	234	2.53	191	2.07	777	8.41
Psychogen. Factors	10	0.11	2	0.02	1	0.01	13	0.14
Other*	573	6.20	465	5.03	845	9.15	1,883	20.39
No Information	9	0.10	3	0.03	543	5.88	555	6.01
Total	4,077	44.14	1,896	20.53	3,264	35.34	9,237	100.00

ICSI

Male Factor ▶	Normal		Reduced Semen Qual.		Azoospermia		Other**		Total	
Female Factor ▼	n	%	n	%	n	%	n	%	n	%
Normal	762	2.36	9,261	28.68	922	2.86	2,966	9.19	13,911	43.08
Tubal Pathology	459	1.42	1,425	4.41	25	0.08	508	1.57	2,417	7.49
Endometriosis	269	0.83	1,180	3.65	47	0.15	594	1.84	2,090	6.47
Hyperandrog./PCO	88	0.27	943	2.92	54	0.17	374	1.16	1,459	4.52
Ovulatory Dysf.	156	0.48	1,748	5.41	104	0.32	452	1.40	2,460	7.62
Psychogen. Factors	4	0.01	26	0.08	0	0.00	5	0.02	35	0.11
Other*	472	1.46	4,152	12.86	249	0.77	2,539	7.86	7,412	22.95
No Information	23	0.07	86	0.27	29	0.09	2,369	7.34	2,507	7.76
Total	2,233	6.92	18,821	58.29	1,430	4.43	9,807	30.37	32,291	100.00

*) The indications "sperm antibodies" and "cervical factor" are included here

**) The indication "pathological function test" is included here

IVF and ICSI – Results 2012

Prospective Data

IVF 2012

	n	%	Fertilisation %	Embryo %	Transfer %	Clin. Preg. %
IVF	9,237	100.00				
Successful Fertilis.*	8,591	93.01	100.00			
Minimum 1 Embryo	8,295	89.80	96.55	100.00		
ET Performed	8,183	88.59	95.25	98.65	100.00	
Clin. Pregnancy	2,484	26.89	28.91	29.95	30.36	100.00
Birth	1,316					52.98
Miscarriage	429					17.27
Ectopic Pregnancy	55					2.21
No Information	684					27.54

ICSI 2012 Total

	n	%	Fertilisation %	Embryo %	Transfer %	Clin. Preg. %
ICSI	31,430	100.00				
Successful Fertilis.*	29,956	95.31	100.00			
Minimum 1 Embryo	29,036	92.38	96.93	100.00		
ET Performed	28,411	90.39	94.84	97.85	100.00	
Clin. Pregnancy	8,246	26.24	27.53	28.40	29.02	100.00
Birth	4,400					53.36
Miscarriage	1,306					15.84
Ectopic Pregnancy	130					1.58
No Information	2,410					29.23

*) Successful fertilisation of at least one oocyte per cycle

TESE and Cryo Transfer – Results 2012

Prospective Data

ICSI 2012 Sperm Retrieval by TESE or Cryo TESE

	n	%	Fertilisation %	Embryo %	Transfer %	Clin. Preg. %
ICSI	1,908	100.00				
Successful Fertilis.*	1,742	91.30	100.00			
Minimum 1 Embryo	1,685	88.31	96.73	100.00		
ET Performed	1,650	86.48	94.72	97.92	100.00	
Clin. Pregnancy	451	23.64	25.89	26.77	27.33	100.00
Birth	251					55.65
Miscarriage	62					13.75
Ectopic Pregnancy	6					1.33
No Information	132					29.27

Cryo Transfer – Results 2012

Prospective Data



Cryo Transfer 2012

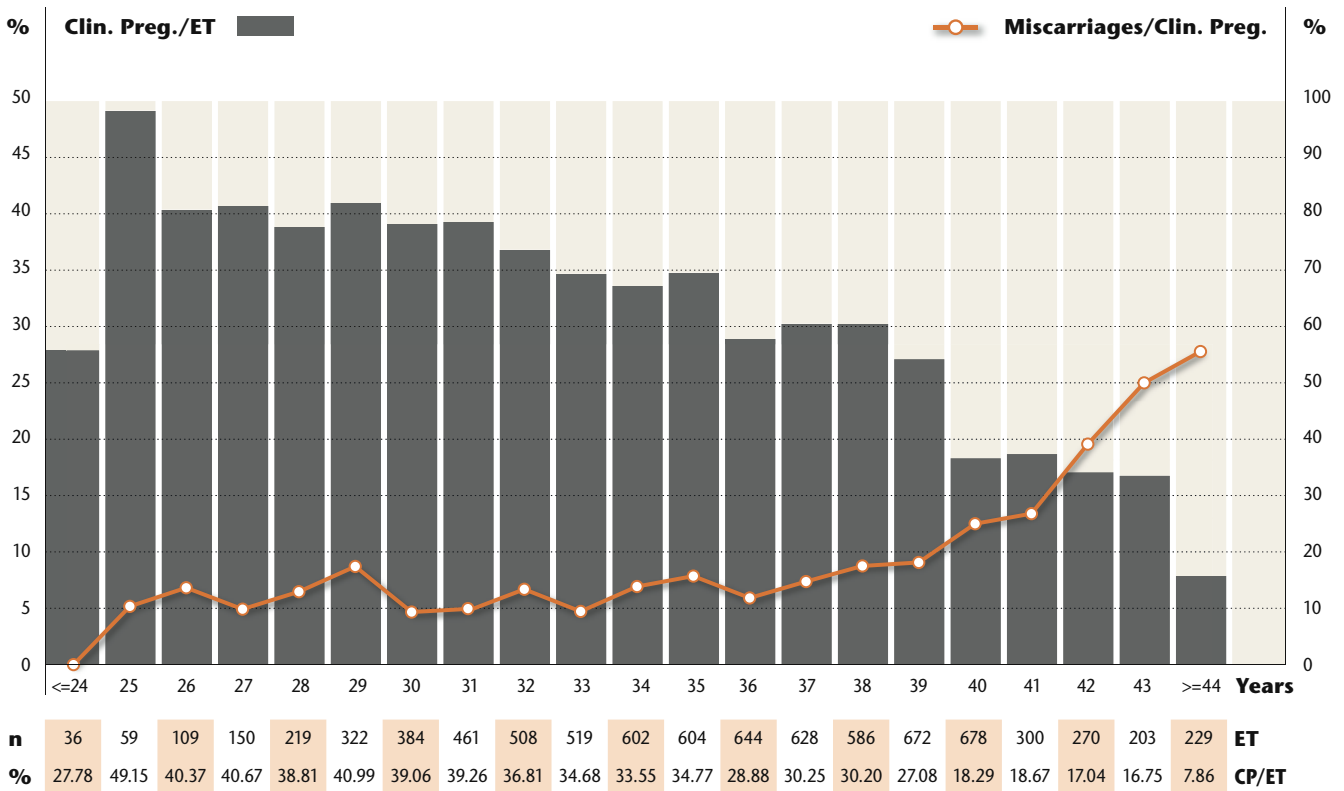
	n	%	PN %	Transfer %	Clin. Preg. %
Cryo Transfer Cycles	17,401	100.00			
Thawed PN	15,310	87.98	100.00		
ET Performed	15,045	86.46	98.27	100.00	
Clin. Pregnancy	3,171	18.22	20.71	21.08	100.00
Birth	1,557				49.10
Miscarriage	617				19.46
Ectopic Pregnancy	63				1.99
No Information	934				29.45

*) Successful fertilisation of at least one oocyte per cycle

Outcome (Clinical Pregnancy (CP)) as a Function of Female Age 2012

Prospective Data

IVF 2012



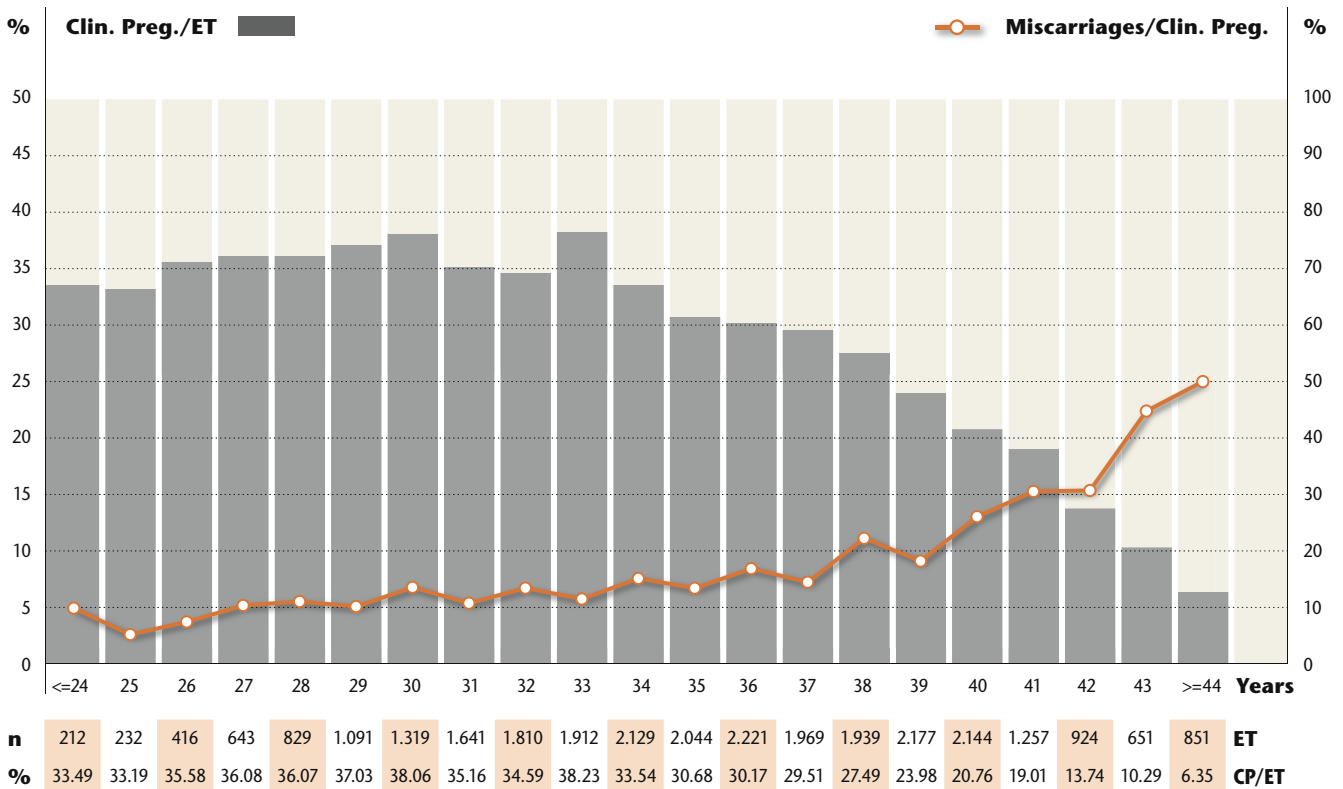
Age in Years	OPU	Oocytes ¹	Insemin. ¹	ET	ET/OPU %	Trans. Embr. ¹	CP	CP/OPU %	CP/ET %	CP/ET: 2 Embr. transf. + min. 2 PN surplus
<= 29	1,033	11.62	11.25	895	86.64	1.91	361	34.95	40.34	42.59
30 – 34	2,775	10.33	10.03	2,474	89.15	1.90	900	32.43	36.38	40.12
35 – 39	3,499	8.50	8.43	3,134	89.57	1.90	945	27.01	30.15	33.97
>= 40	1,930	6.35	6.54	1,680	87.05	1.95	278	14.40	16.55	30.23
Total	9,237	8.78	8.59	8,183	88.59	1.91	2,484	26.89	30.36	37.28

1) Mean

Outcome (Clinical Pregnancy (CP)) as a Function of Female Age 2012

Prospective Data

ICSI 2012



Age in Years	OPU	Oocytes ¹	Insemin. ¹	ET	ET/OPU %	Trans. Embr. ¹	CP	CP/OPU %	CP/ET %	CP/ET: 2 Embr. transf. + min. 2 PN surplus
<= 29	3,746	12.08	9.47	3,423	91.38	1.83	1,231	32.86	35.96	39.26
30 – 34	9,529	11.48	8.98	8,811	92.47	1.87	3,150	33.06	35.75	37.63
35 – 39	11,330	8.99	7.23	10,350	91.35	1.91	2,933	25.89	28.34	32.29
>= 40	6,735	6.57	5.50	5,827	86.52	1.94	932	13.84	15.99	23.06
Total	31,340	9.46	7.59	28,411	90.65	1.90	8,246	26.31	29.02	31.59

1) Mean

Clinical Pregnancies (CP)/ET as a Function of the Number of Embryos Transferred and Age Groups 2012



IVF, ICSI, Cryo Transfer – Prospective Data

IVF

Age in Years	1 Embryo		2 Embryos		3 Embryos		Total	
	ET	CP/ET %	ET	CP/ET %	ET	CP/ET %	ET	CP/ET %
<= 24	6	16.67	29	31.03	0	-	35	28.57
25 – 29	68	23.53	740	42.30	32	46.88	840	40.95
30 – 34	299	19.73	1,989	38.39	151	37.75	2,439	34.32
35 – 39	545	17.343	2,255	33.99	455	30.55	3,255	30.29
40 – 44	347	10.95	787	18.17	394	20.56	1,528	17.15
>= 45	30	3.33	32	3.13	24	16.67	86	6.98
Total	1,295	15.58	5,832	34.21	1,056	28.03	8,183	30.01

ICSI

Age in Years	1 Embryo		2 Embryos		3 Embryos		Total	
	ET	CP/ET %	ET	CP/ET %	ET	CP/ET %	ET	CP/ET %
<= 24	18	22.22	171	38.60	11	0.00	200	35.00
25 – 29	292	22.95	2,528	38.29	232	34.05	3,052	36.50
30 – 34	1,017	23.11	6,662	38.07	734	33.66	8,413	35.86
35 – 39	1,950	14.72	7,245	32.59	1,870	31.52	11,065	28.28
40 – 44	1,375	8.73	2,520	19.56	1,389	20.60	5,284	16.98
>= 45	167	1.80	128	7.03	102	6.93	397	4.79
Total	4,819	14.76	19,254	33.41	4,338	27.55	28,411	29.02

Cryo Transfer

Age in Years	1 Embryo		2 Embryos		3 Embryos		Total	
	ET	CP/ET %	ET	CP/ET %	ET	CP/ET %	ET	CP/ET %
<= 24	19	10.53	77	23.38	18	19.05	114	21.24
25 – 29	248	11.69	1,146	24.96	322	26.93	1,716	23.44
30 – 34	863	13.56	3,533	24.00	1,019	27.65	5,415	21.45
35 – 39	1,120	13.30	3,396	22.23	1,014	24.65	5,530	20.75
40 – 44	458	8.08	1,180	18.90	532	16.88	2,170	13.48
>= 45	37	0.00	35	14.29	28	0.00	100	4.95
Total	2,745	12.17	9,367	22.79	2,933	24.62	15,045	20.59

Clinical Pregnancies (CP)/Fresh Transfer as a Function of Embryo Quality 2012

IVF, ICSI, IVF/ICSI – Prospective Data

Quality		<= 29 Years		30 – 34 Years		35 – 39 Years		>= 40 Years		Total	
Ideal	Not Ideal	ET	CP/ET %	ET	CP/ET %	ET	CP/ET %	ET	CP/ET %	ET	CP/ET %
0	1	68	11.76	283	12.01	488	6.97	384	3.39	1,223	7.28
0	2	290	23.45	821	19.37	812	18.35	365	8.22	2,288	17.74
0	3	25	4.00	80	15.00	160	16.88	142	9.86	407	13.27
1	0	329	24.32	1,085	25.35	1,834	17.61	1,585	9.72	4,833	17.21
1	1	451	31.26	1,158	32.38	1,267	25.26	592	15.88	3,468	26.82
1	2	25	28.00	113	28.32	187	27.81	162	13.58	487	23.20
2	0	2,977	41.18	7,162	41.43	7,255	34.39	2,672	20.55	20,066	36.07
2	1	54	25.93	127	37.80	342	30.99	321	17.76	844	26.66
3	0	188	38.83	643	36.70	1,413	33.40	1,411	21.69	3,655	29.74
Total		4,407	36.71	11,472	36.07	13,758	28.91	7,634	16.23	37,271	29.44

Clinical Pregnancies (CP)/Frozen Transfer as a Function of Embryo Quality 2012

Cryo Transfer – Prospective Data

Quality		IVF		ICSI	
Ideal	Not Ideal	ET	CP/ET %	ET	CP/ET %
0	1	158	6.96	489	5.52
0	2	321	11.21	1,015	11.72
0	3	95	20.00	295	12.54
1	0	505	14.46	1,675	14.81
1	1	432	17.59	1,444	18.84
1	2	132	25.00	313	23.96
2	0	1,411	26.51	4,729	26.03
2	1	190	31.58	399	25.56
3	0	374	25.94	1,053	27.26
Total*		3,618	21.53	11,412	20.98

*) In 15 cases there is no information on the quality

Miscarriage (MISC) Rates as a Function of Female Age and Number of Embryos Transferred 2012

Prospective Data

IVF, ICSI, IVF/ICSI

Age in Years	1 Embryo		2 Embryos		3 Embryos		Total	
	CP	MISC/CP %	CP	MISC/CP %	CP	MISC/CP %	CP	MISC/CP %
<= 24	5	0.00	75	8.00	0	-	80	7.50
25 – 29	89	10.11	1,292	9.83	94	12.77	1,475	10.03
30 – 34	328	12.50	3,319	12.11	305	16.07	3,952	12.45
35 – 39	429	18.41	3,145	14.05	621	18.04	4,195	15.09
40 – 44	170	34.71	644	29.04	368	33.15	1,182	31.13
>= 45	4	75.00	10	40.00	11	45.45	25	48.00
Total	1,025	18.63	8,485	13.77	1,399	21.44	10,909	15.21

Cryo Transfer

Age in Years	1 Embryo		2 Embryos		3 Embryos		Total	
	CP	MISC/CP %	CP	MISC/CP %	CP	MISC/CP %	CP	MISC/CP %
<= 24	2	0.00	18	11.11	5	0.00	25	8.00
25 – 29	29	10.34	286	19.58	90	26.67	405	20.49
30 – 34	117	12.82	848	17.10	255	20.00	1,220	17.30
35 – 39	149	25.50	755	18.28	250	22.40	1,154	20.10
40 – 44	37	29.73	223	23.32	102	19.61	362	22.93
>= 45	0	-	5	40.00	0	-	5	40.00
Total	334	20.06	2,135	18.50	702	21.51	3,171	19.33

Clinical Pregnancy Rate (CPR) as a Function of the Stimulation Protocol 2012

Prospective Data

IVF

	u-FSH	rec-FSH	hMG	recLH u. recFSH	recLH u. hMG	Other*	No Info.	Total
Short GnRHa	3	272	222	26	122	3	3	651
Transfer Rate (%)	100.00	91.91	89.19	92.31	90.98	100.00	100.00	90.94
CP/ET (%)	0.00	21.60	25.76	33.33	18.92	33.33	0.00	22.80
Long GnRHa	47	1,727	686	144	513	20	27	3,164
Transfer Rate (%)	95.74	91.95	91.69	83.33	88.69	50.00	44.44	90.36
CP/ET (%)	33.33	35.52	27.66	33.33	29.23	80.00	33.33	32.81
No GnRHa-Analoga	23	375	183	58	150	14	145	948
Transfer Rate (%)	91.30	88.27	85.79	87.93	86.67	42.86	81.38	85.86
CP/ET (%)	9.52	36.56	21.02	33.33	34.62	16.67	21.19	29.98
GnRHa-Antagonists	64	2,644	928	339	392	91	16	4,474
Transfer Rate (%)	96.88	88.88	86.21	80.24	86.22	60.44	81.25	86.95
CP/ET (%)	24.19	33.49	24.50	27.21	23.08	27.27	15.38	30.00
Total	137	5,018	2,019	567	1,177	128	191	9,237

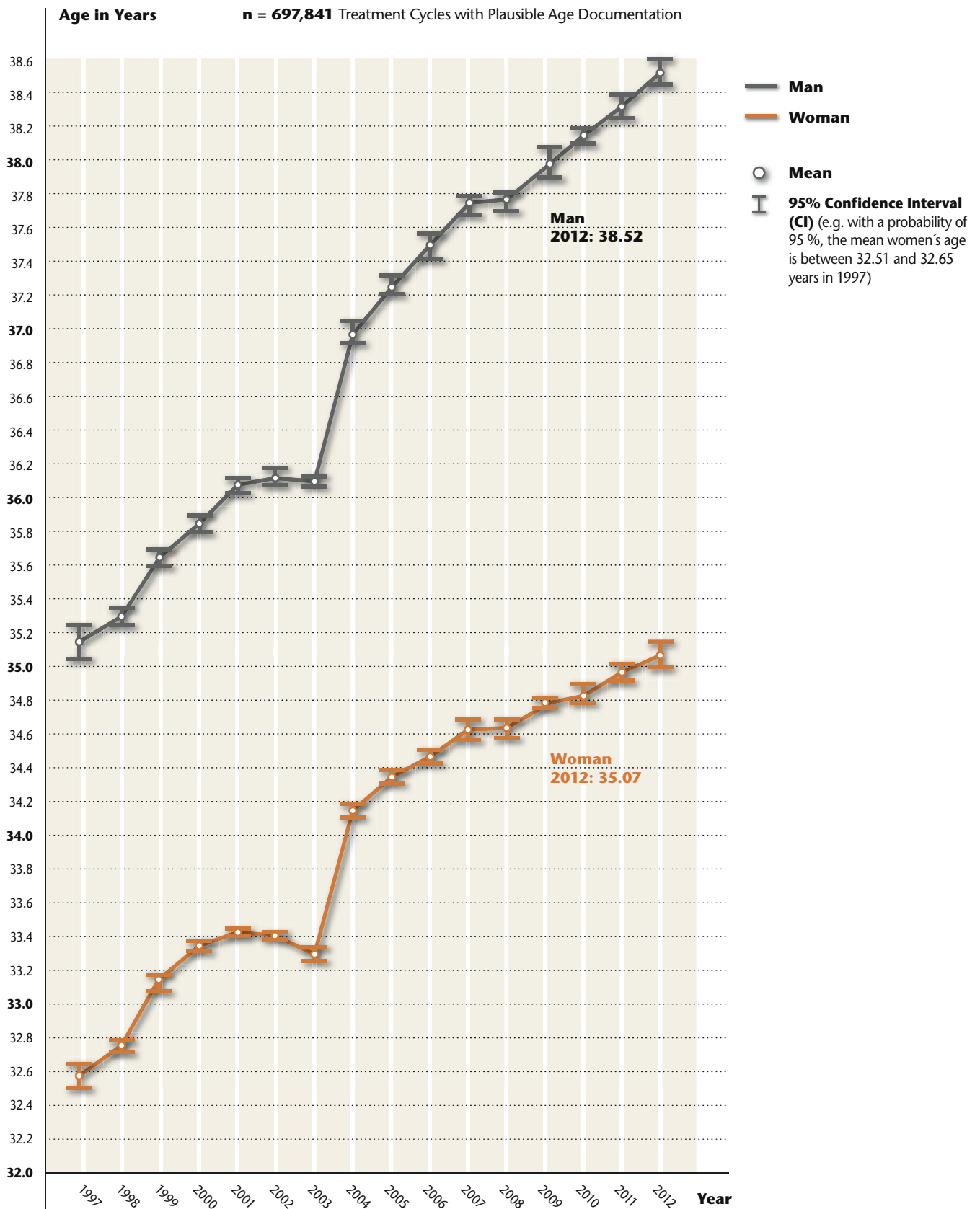
ICSI

	u-FSH	rec-FSH	hMG	recLH u. recFSH	recLH u. hMG	Other*	No Info.	Total
Short GnRHa	40	805	837	77	421	98	1	2,279
Transfer Rate (%)	90.00	93.42	92.23	87.01	89.55	88.78	100.00	91.79
CP/ET (%)	11.11	25.66	24.74	16.42	15.65	11.49	0.00	22.37
Long GnRHa	141	5,753	2,078	552	2,146	125	23	10,818
Transfer Rate (%)	93.62	94.16	94.08	92.75	92.96	94.40	95.65	93.83
CP/ET (%)	32.58	34.04	28.13	28.91	30.83	32.20	27.27	31.96
No GnRHa-Analoga	46	1,672	707	185	809	36	710	4,165
Transfer Rate (%)	91.30	91.51	88.54	91.35	90.98	80.56	73.80	87.78
CP/ET (%)	42.86	34.84	23.16	26.04	29.48	24.14	16.22	28.69
GnRHa-Antagonists	161	8,180	2,820	1,096	1,618	212	81	14,168
Transfer Rate (%)	90.68	89.17	86.91	83.58	93.33	59.91	90.12	88.35
CP/ET (%)	19.18	31.18	22.73	24.67	23.44	16.98	15.07	27.85
Total	388	16,410	6,442	1,910	4,994	471	815	31,430

*) e.g. u-FSH and hMG, Clomifen/rec-FSH, Clomifen/hMG etc.

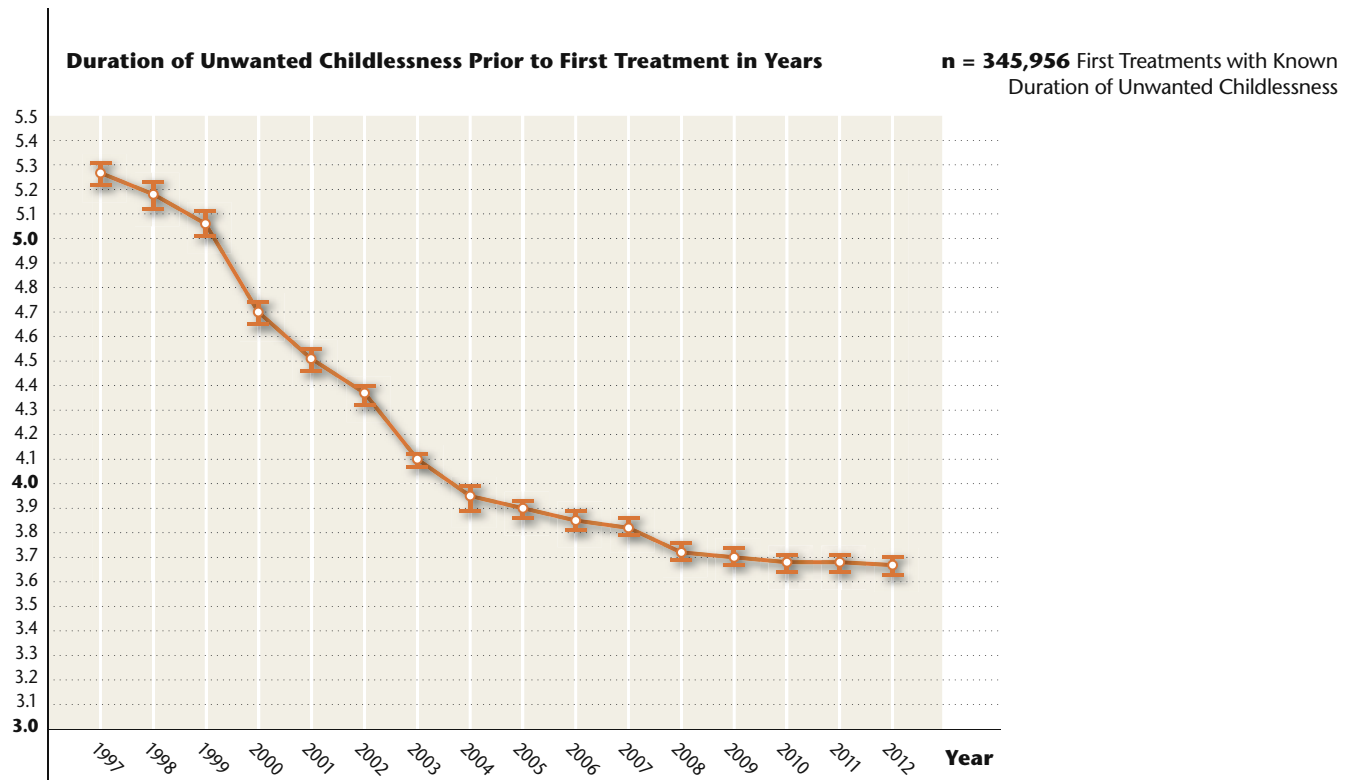
Mean Age for Women and Men 1997 – 2012

IVF, ICSI, IVF/ICSI – Prospective and Retrospective Data
(Based on Registry Participants 2012)



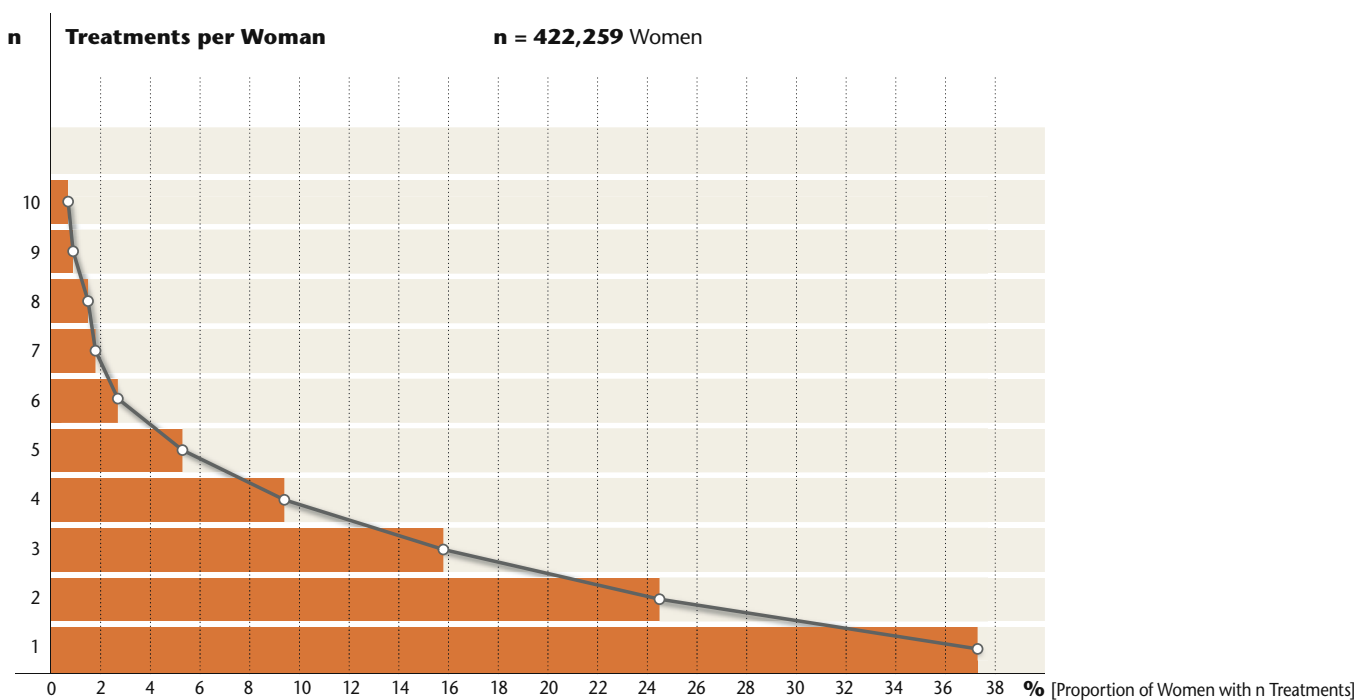
Duration of Unwanted Childlessness Prior to First Treatment 1997 – 2012

IVF, ICSI, IVF/ICSI – Prospective and Retrospective Data (Based on Registry Participants 2012)



Number of Treatment Cycles per Woman 1997 – 2012

IVF, ICSI, IVF/ET, Cryo ET – Prospective and Retrospective Data (Based on Registry Participants 2012)



Children Born 1997–2012

Prospective and Retrospective Data



IVF, ICSI, IVF/ICSI

	Singletons		Twins		Triplets		Quadruplets		Total
	n	%	n	%	n	%	n	%	n
2001	6,798	60.89	3,956	35.43	411	3.68	0	-	11,165
*	(6,774)	(61.04)	(3,919)	(35.31)	(405)	(3.65)	(0)	-	(11,098)
2002	7,746	62.59	4,256	34.39	366	2.96	8	0.06	12,376
*	(7,724)	(62.78)	(4,210)	(34.22)	(362)	(2.94)	(7)	(0.06)	(12,303)
2003	10,723	62.13	5,960	34.53	552	3.20	24	0.14	17,259
*	(10,688)	(62.78)	(5,866)	(34.22)	(533)	(2.94)	(24)	(0.14)	(17,111)
2004	5,368	63.69	2,826	33.53	234	2.78	0	-	8,428
*	(5,352)	(62.46)	(2,801)	(34.28)	(223)	(3.11)	(0)	-	(8,376)
2005	5,527	63.84	2,936	33.91	183	2.11	12	0.14	8,658
*	(5,515)	(63.90)	(2,906)	(33.44)	(179)	(2.66)	(11)	(0.13)	(8,611)
2006	5,906	65.50	2,922	32.41	189	2.10	0	-	9,017
*	(5,894)	(64.05)	(2,890)	(33.75)	(174)	(2.08)	(0)	-	(8,958)
2007	6,663	65.45	3,504	33.9	150	1.45	4	0.04	10,231
*	(6,628)	(64.69)	(3,471)	(33.88)	(143)	(1.40)	(4)	(0.04)	(10,246)
2008	6,696	64.09	3,528	33.77	216	2.07	8	0.08	10,448
*	(6,672)	(64.34)	(3,481)	(33.57)	(209)	(2.02)	(8)	(0.08)	(10,370)
2009	7,253	65.89	3,560	32.34	186	1.69	8	0.07	11,007
*	(7,217)	(66.02)	(3,523)	(32.23)	(183)	(1.67)	(8)	(0.07)	(10,931)
2010	6,767	64.42	3,554	33.83	183	1.74	0	-	10,504
*	(6,724)	(64.62)	(3,507)	(33.70)	(175)	(1.68)	(0)	-	(10,406)
2011	6,940	63.64	3,856	35.00	219	1.98	0	-	11,015
*	(6,880)	(63.95)	(3,832)	(35.06)	(216)	(1.97)	(0)	-	(10,928)
2012	5,476	62.69	3,105	35.55	153	1.75	0	-	8,734
*	(5,428)	(62.65)	(3,082)	(35.28)	(153)	(1.75)	(0)	-	(8,663)

*) The values in brackets indicate live births. Totalling 1997 – 2012: 100,059 (96,611) singletons, 54,716 (54,094) twins, 5,275 (5,025) triplets, 88 (85) quadruplets. In total: 160,138 (155,815)

NOTE: Including the year 2010, values are taken from the 2011 annual. From 2011 on they are based on the 2012 registry participants.

Children Born 1997–2012

Prospective and Retrospective Data



Total (IVF, ICSI, IVF/ICSI, Cryo Transfer)

	Singletons		Twins		Triplets		Quadruplets		Total
	n	%	n	%	n	%	n	%	n
2001	7,795	62.20	4,288	34.21	450	3.59	0	-	12,533
*	(7,764)	(62.33)	(4,248)	(34.10)	(444)	(3.56)	(0)	-	(12,456)
2002	8,930	63.84	4,662	33.33	387	2.77	8	0.06	13,987
*	(8,902)	(64.02)	(4,615)	(33.19)	(382)	(2.75)	(7)	(0.05)	(13,906)
2003	11,922	63.16	6,334	33.55	597	3.16	24	0.13	18,877
*	(11,887)	(63.48)	(6,237)	(33.31)	(578)	(3.09)	(24)	(0.13)	(18,726)
2004	6,891	65.63	3,336	31.77	273	2.6	0	-	10,500
*	(6,869)	(65.81)	(3,306)	(31.68)	(262)	(2.51)	(0)	-	(10,437)
2005	7,038	65.76	3,440	32.14	213	1.99	12	0.11	10,703
*	(7,020)	(65.93)	(3,408)	(32.01)	(209)	(1.96)	(11)	(0.10)	(10,648)
2006	7,419	66.87	3,450	31.10	222	2.00	4	0.04	11,095
*	(7,402)	(67.14)	(3,417)	(30.99)	(202)	(1.83)	(4)	(0.04)	(11,025)
2007	8,407	66.35	4,976	32.17	183	1.44	4	0.03	12,670
*	(8,364)	(66.45)	(4,043)	(32.12)	(176)	(1.40)	(4)	(0.03)	(12,587)
2008	8,444	65.79	4,142	32.27	240	1.87	8	0.06	12,834
*	(8,416)	(66.07)	(4,084)	(32.06)	(230)	(1.81)	(8)	(0.06)	(12,738)
2009	9,016	67.32	4,152	31.00	216	1.61	8	0.06	13,392
*	(8,969)	(67.42)	(4,114)	(30.92)	(213)	(1.60)	(8)	(0.06)	(13,304)
2010	8,619	66.18	4,156	31.91	249	1.91	0	-	13,024
*	(8,566)	(66.35)	(4,105)	(31.80)	(239)	(1.85)	(0)	-	(12,910)
2011	8,839	64.55	4,556	33.27	298	2.18	0	-	13,693
*	(8,767)	(64.03)	(4,526)	(33.05)	(294)	(2.15)	(0)	-	(13,587)
2012	7,025	65.61	3,683	34.39	201	1.88	0	-	10,909
*	(6,968)	(65.07)	(3,660)	(34.18)	(201)	(1.88)	(0)	-	(10,829)

*) The values in brackets indicate live births. Totalling 1997 – 2012: 120,730 (120,584) singletons, 61,755 (61,098) twins, 5,752 (5,588) triplets, 92 (89) quadruplets. In total: 188,329 (187,359)

NOTE: Including the year 2010, values are taken from the 2011 annual. From 2011 on they are based on the 2012 registry participants.

HAGEN
Population of 187,447

KASSEL
Population of 196,496

188,329
Children born 1997–2012

Children as a Function of Week of Gestation (WoG) and Birth Weight (BW) 2011*

Singletons 2011

WoG	<25	25	26	27	28	29	30	31	32	33	34	35	36	37	38	39	40	41	>41	Total
n	27	11	15	16	19	14	24	40	48	90	138	238	367	945	1,778	2,153	1,871	395	32	8,221
BW Q 25	400	600	620	805	800	995	1,380	1,440	1,590	1,990	2,030	2,340	2,600	2,840	3,010	3,150	3,276	3,340	3,150	2,990
BW Median	600	718	950	1,055	995	1,265	1,475	1,678	1,890	2,209	2,365	2,643	2,940	3,100	3,300	3,420	3,550	3,640	3,500	3,330
BW Q 75	680	860	1,245	1,234	1,300	1,490	1,670	1,880	2,114	2,400	2,600	2,880	3,180	3,400	3,600	3,710	3,840	3,920	3,850	3,660

Percentiles 2011: p25 = 38th WoG, p50 = 39th WoG, p75 = 40th WoG;

Percentiles 1997 - 2011: p25 = 38th WoG, p50 = 39th WoG, p75 = 40th WoG

Proportion of children born before the completion of the 37th WoG: 12.74%

Twins 2011

WoG	<25	25	26	27	28	29	30	31	32	33	34	35	36	37	38	39	40	Total**
n	54	24	38	42	56	74	86	102	162	340	446	504	872	776	252	80	10	3,928
BW Q 25	480	750	865	920	990	1,120	1,340	1,490	1,650	1,840	1,980	2,190	2,345	2,480	2,600	2,540	2,590	2,000
BW Median	580	820	940	994	1,115	1,318	1,484	1,700	1,860	2,010	2,200	2,410	2,590	2,710	2,830	2,935	3,190	2,400
BW Q 75	720	920	990	1,120	1,240	1,460	1,600	1,850	2,050	2,210	2,410	2,630	2,840	2,904	3,040	3,200	3,640	2,740

Percentiles 2011: p25 = 34th WoG, p50 = 36th WoG, p75 = 37th WoG;

Percentiles 1997–2011: p25 = 34th WoG, p50 = 36th WoG, p75 = 37th WoG

Proportion of children born before the completion of the 37th WoG: 71.28%

***) The total contains 10 cases with a WoG > 40

Triplets 2011

WoG	24	25	26	27	28	29	30	31	32	33	34	35	Total***
n	9	3	3	17	14	39	9	39	50	60	14	6	267
BW Q 25	475	550	720	924	1,035	1,190	1,370	1,550	1,580	1,740	1,850	1,740	1,280
BW Median	580	760	720	980	1,140	1,320	1,480	1,730	1,765	1,950	1,978	2,090	1,660
BW Q 75	610	790	900	1,115	1,280	1,420	1,730	1,843	1,870	2,190	1,990	2,200	1,920

Percentiles 2011: p25 = 29th WoG, p50 = 32th WoG, p75 = 33th WoG;

Percentiles 1997–2011: p25 = 30th WoG, p50 = 32th WoG, p75 = 33th WoG

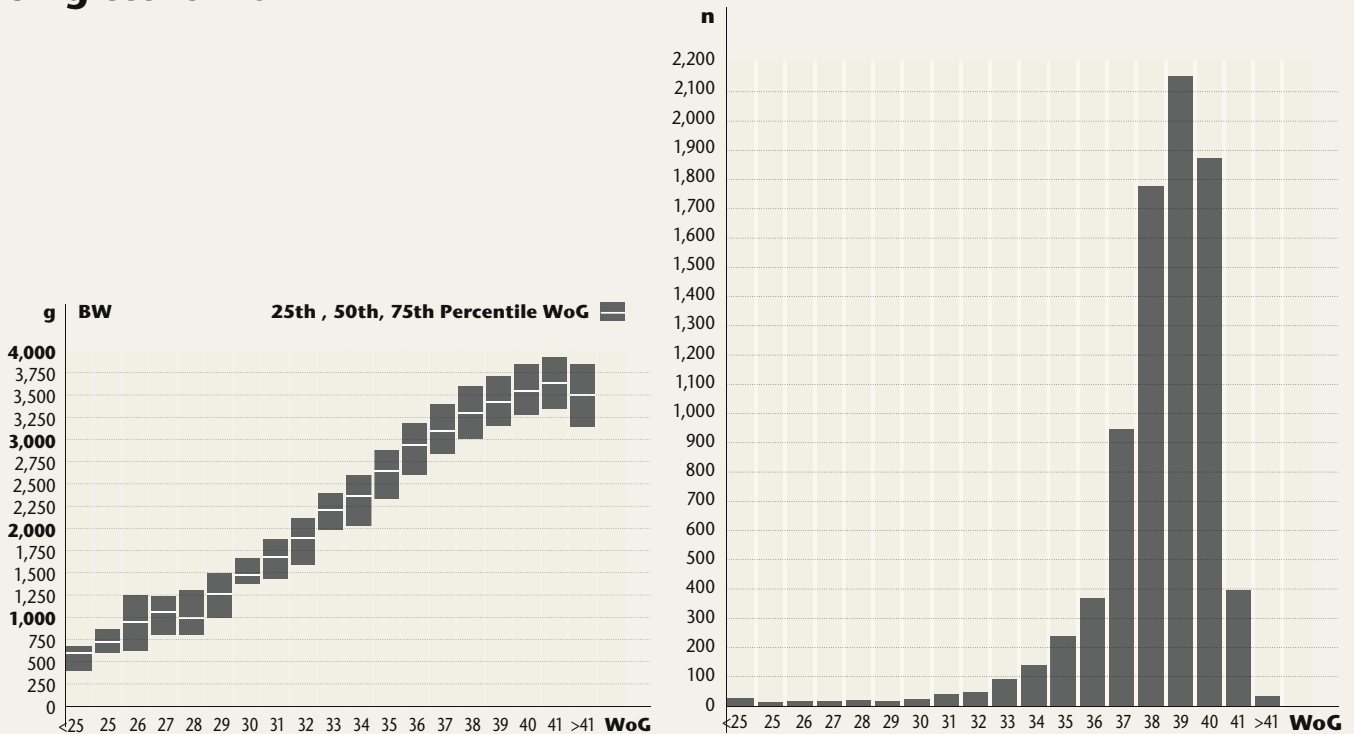
Proportion of children born before the completion of the 37th WoG: 98.50%

***) The total contains 4 cases with a WoG > 35

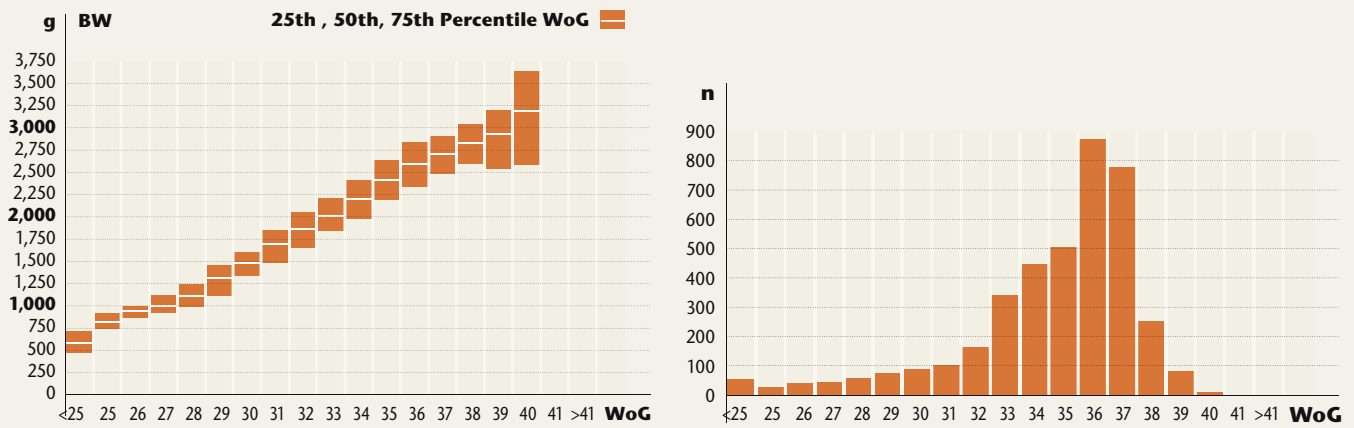
*) Children with plausible birth weight and week of gestation, using prospective and retrospective data

Children as a Function of Week of Gestation (WoG) and Birth Weight (BW) 2011*

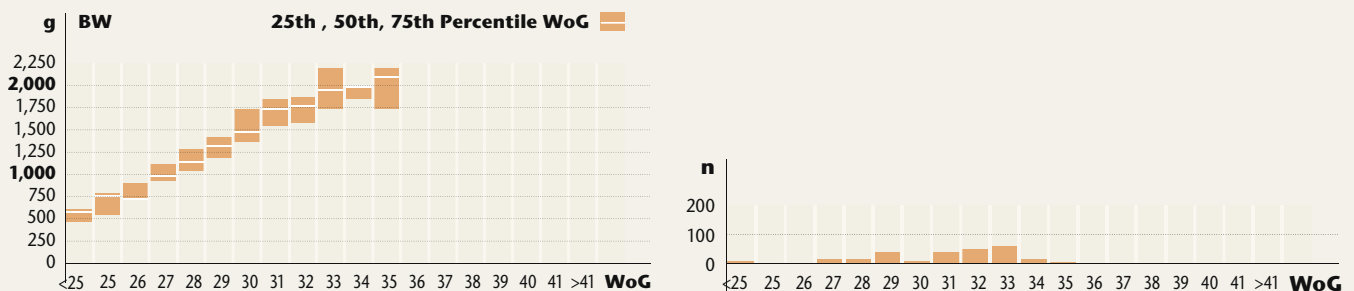
Singletons 2011



Twins 2011



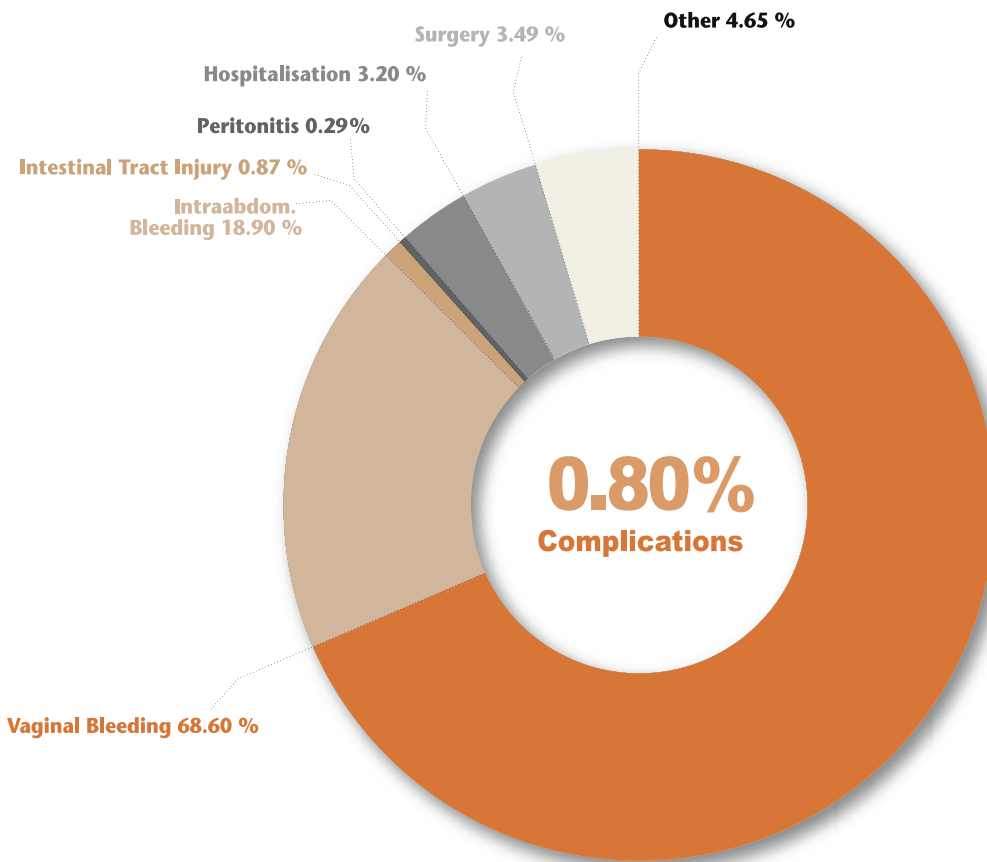
Triplets 2011



*) Children with plausible birth weight and week of gestation, using prospective and retrospective data

Complications as a Function of Ovum Pick-up (OPU) 2012

Prospective Data



Total OPU's	42,895	100.00%
No Information	0	0.00%
No Complications	42,551	99.20%
Complications	344	0.80%

Complications	n	%
Vaginal Bleeding	236	68.60
Intraabdom. Bleeding	65	18.90
Intestinal Tract Injury	3	0.87
Peritonitis	1	0.29
Hospitalisation	11	3.20
Surgery	12	3.49
Other	16	4.65
Total	344	100.00

Ovarian Hyperstimulation Syndrome (OHSS) as a Function of the Stimulation Protocol

IVF, ICSI, IVF/ICSI – Prospective Data

	Stimulation	%	Oocytes Retrieved n	OHSS III	OHSS III/Stim %
Short GnRH	3,376	7.35	7.05	0	-
FSH only	1,228		8.57	0	-
hMG only	1,233		6.48	0	-
FSH + hMG	721		5.94	0	-
Other	151		6.29	0	-
No Information	43		1.02	0	-
Long GnRH	15,320	33.35	9.93	71	0,46
FSH only	8,231		11.03	22	0.27
hMG only	3,053		8.45	2	0.07
FSH + hMG	3,031		9.28	45	1.48
Other	812		8.16	2	0.25
No Information	193		1.95	0	-
No Analoga	6,769	14.73	8.19	9	0.13
FSH only	3,361		10.07	6	0.18
hMG only	1,461		8.81	2	0.14
FSH + hMG	1,203		9.09	1	0.08
Other	180		6.44	0	-
No Information	564		4.56	0	-
GnRH-Antagonists	20,474	44.57	8.86	37	0.18
FSH only	11,856		10.39	29	0.24
hMG only	4,286		7.15	2	0.05
FSH + hMG	2,438		7.11	6	0.25
Other	258		6.19	0	-
No Information	1,636		5.98	0	-
Total	45,939	100.00	9.40	117	0.25

Kinderwunschzentrum Dresden
Praxisklinik Dr. med. H.-J. Held
Dr. med. Hans-Jürgen Held
Prager Straße 8 a
01069 Dresden
T: 0351-50100-0, F: 0351-501400-28
info@ivf-dresden.de
www.ivf-dresden.de

Gynäkologische Endokrinologie und Reproduktionsmedizin der Universitätsfrauenklinik Dresden
Dr. med. Constanze Reisenbüchler,
Dr. med. Katja Keller,
Dr. med. Jennifer-Lucia Wacker,
Prof. Dr. med. Wolfgang Distler,
Dr. rer. nat. Gudrun Keck
Fetscherstraße 74
01307 Dresden
T: 0351-4583491, F: 0351-4585351
wolfgang.distler@uniklinikum-dresden.de
www.uniklinikum-dresden.de/gyn

Kinderwunschzentrum Leipzig-Chemnitz
Dr. med. Fayez Abu Hmeidan,
Dr. med. Petra Jogschies, Dörte Geistert,
Laila Shugair
Goldschmidtstraße 30
04103 Leipzig
T: 0341-141200, F: 0341-1412081
info@ivf-leipzig.de
www.ivf-leipzig.de

Kinderwunschzentrum Praxisklinik City Leipzig
Dr. med. Astrid Gabert,
Dr. med. Katharina Bauer,
Dr. med. Isabel Schwandt, FÄ Jana Sonneck,
Dr. med. Doreen Marx,
Prof. Dr. med. Henry Alexander,
Dr. rer. nat. Stefanie Breuer
Petersstraße 1
04109 Leipzig
T: 0341-215855-0, F: 0341-215855-17
info@ivf-city-leipzig.de
www.ivf-city-leipzig.de

Universitätsklinikum Halle (Saale) – Zentrum für Reproduktionsmedizin und Andrologie
Univ.-Prof. Dr. med. Hermann M. Behre, Dr. med. Petra Kaltwaßer, Dr. med. Solveig Köller,
Dr. rer. nat. Ewald Seliger, Dr. rer. nat. Thomas Greither
Ernst-Grube-Straße 40
06120 Halle (Saale)
T: 0345-557-3332, F: 0345-557-4788
zra@uk-halle.de
www.kinderwunsch-halle.de

Zentrum für Reproduktionsmedizin Jena & Erfurt
PD Dr. med. habil. Heidi Fritzsche,
Dipl. med. Jens-Peter Reiher,
Dr. med. Angela Hoffmann,
Dr. med. Andreas Fritzsche
Markt 4
07743 Jena
T: 03641-829610, F: 03641-829681
Dr.H.Fritzsche@t-online.de
www.kinderwunschnet.de

Kinderwunschzentrum Leipzig-Chemnitz
Dr. med. Fayez Abu Hmeidan,
Dr. med. Petra Jogschies, Dörte Geistert,
Laila Shugair
Jakobikirchplatz 4
09111 Chemnitz
T: 0371-5034980, F: 0371-50349881
info@ivf-chemnitz.de
www.ivf-chemnitz.de

Kinderwunschzentrum Praxisklinik City Leipzig
Standort Chemnitz
Dr. med. Astrid Gabert,
Dr. med. Katharina Bauer,
Dr. med. Isabel Schwandt, FÄ Jana Sonneck,
Dr. med. Doreen Marx,
Dr. rer. nat. Stefanie Breuer
Flemmingstraße 2 a
09116 Chemnitz
T: 0371-433130-0, F: 0371-433130-17
info@kinderwunschzentrum-chemnitz.de
www.ivf-city-leipzig.de

Kinderwunschzentrum am Potsdamer Platz
Dr. med. Anja Mutz,
Dr. med. Hanadi Awwadeh
Leipziger Platz 7
10117 Berlin
T: 030-2008950-0, F: 030-2008950-99
info@kinderwunsch-potsdamerplatz.de
www.kinderwunsch-potsdamerplatz.de

Praxis für Fertilität – Kinderwunsch- und Endometriose-Zentrum Berlin
Dr. med. Gülden Halis, Dr. med. David J. Peet,
Dipl.-Biol. Sonja Zeitler
Friedrichstraße 79
10117 Berlin
T: 030-8321190-0, F: 030-8321190-19
info@fertilitaet.de
www.fertilitaet.de

MVZ Praxisklinik Sydow am Gendarmenmarkt GmbH
Dr. med. Peter Sydow, Dr. med. Carmen Sydow,
Dr. med. Ulrike Bergmann-Hensel,
Dr. med. Birgit Bestvater, Dr. med. Wibke Wilkening
Kronenstraße 55 - 58
10117 Berlin
T: 030-20626720, F: 030-206267218
info@praxisklinik-sydow.de
www.praxisklinik-sydow.de

Gynäkologikum Berlin
PD Dr. med. Bernd Krause,
Dr. med. Björn Horstkamp,
Dipl. med. Gili Pajenson,
Dr. med. Alexandra von Palombini,
Dr. med. Petra Rudolph
Uhlandstraße 20 - 25
10623 Berlin
T: 030-88034900, F: 030-88034909
info@gynaekologikum-berlin.de
www.gynaekologikum-berlin.de

Kinderwunschzentrum Berlin
Dr. med. Reinhard Hannen,
Dr. med. Christian Friedrich Stoll
Landgrafenstraße 14
10787 Berlin
T: 030-263983-0, F: 030-263983-99
info@kinderwunschzentrum.de
www.kinderwunschzentrum.de

Kinderwunsch am Wittenbergplatz
Praxis Dr. med. Rolf Metzger in Praxisgemeinschaft mit Berliner Kinderwunschzentrum
Dr. med. Rolf Metzger,
Dr. med. Christiane Peters, Rainer Mogalle
Tauentzienstraße 6
10789 Berlin
T: 030-21962428, F: 030-23607395
mail@berlin-ivf-praxis.de
www.berlin-ivf-praxis.de

Kinderwunschzentrum an der Gedächtniskirche
Dr. med. Matthias Bloechle,
Dr. med. Silke Marr
Rankestraße 34
10789 Berlin
T: 030-219092-0, F: 030-219092-99
info@kinderwunsch-berlin.de
www.kinderwunsch-berlin.de

Kinderwunschzentrum FERA
im Wenckebach-Klinikum
Dr. med. Andreas Jantke,
Dr. med. Anna Stegelmann,
Dipl.-Biol. Cornelia Meyer
Wenckebachstraße 23
12099 Berlin
T: 030-760070130, F: 030-760070160
kinderwunsch@fera-berlin.de
www.kinderwunsch-ivf-berlin.de

Kinderwunschzentrum am Innsbrucker Platz
Berlin
Babette Remberg,
Dr. med. Susanne Tewordt-Thyselius,
Dr. rer. nat. Thomas Jeziorowski
Hauptstraße 65
12159 Berlin
T: 030-85757930, F: 030-85757935
praxis@kinderwunschpraxis-berlin.de
www.kinderwunschpraxis-berlin.de

Praxis für Kinderwunschtherapie
Berlin Helle-Mitte
Dr. med. Muna Zaghoul-Abu Dakah,
Dr. med. Svetlana Hoffmann
Stendaler Straße 24
12627 Berlin
T: 030-992779-0, F: 030-99277922
info@berliner-kinderwunsch.de
www.berliner-kinderwunsch.de

Fertility Center Berlin – Auf dem Gelände der DRK Kliniken Westend
Prof. Dr. med. Heribert Kantenich,
Dr. med. Gabriele Stief,
Dr. med. Andreas Tandler-Schneider,
Dr. med. Anette Siemann,
Dr. med. Marina Werling,
Dr. rer. nat. Ulrike Montag,
Dr. rer. nat. Claus Sibold,
Bipl.-Biopharmak. Jacqueline Ulrich
Spandauer Damm 130
14050 Berlin
T: 030-233208110, F: 030-233208119
info@fertilitycenter-berlin.de
www.fertilitycenterberlin.de

Kinderwunschzentrum Potsdam
Dr. med. Kay-Thomas Moeller,
Dr. med. Kathleen Linca,
Dr. Manzoor Nowshari
Babelsberger Straße 8
14473 Potsdam
T: 0331-23189292, F: 0331-23189293
info@kinderwunsch-potsdam.de
www.kinderwunsch-potsdam.de

Praxiszentrum Frauenheilkunde Rostock
PD Dr. med. Heiner Müller,
Annette Busecke, Anja Bossow
Südring 81
18059 Rostock
T: 0381-4401-2030, F: 0381-4401-2031
info@ivf-rostock.de
www.ivf-rostock.de

MVZ Fertility Center Hamburg GmbH
Prof. Dr. med. Klaus Rudolf,
Dr. med. (IL) Robert Fischer,
Dr. med. Olaf G. J. Naether,
Dr. med. Kay Christian Löbbecke
Speersort 4
20095 Hamburg
T: 040-30804400, F: 040-30804952
fch@kinderwunsch-hamburg.de
www.kinderwunsch-hamburg.de

Kinderwunschzentrum Altonaer Straße
im Gynaekologikum Hamburg
Dr. med. Annick Horn, Dr. med. Wolf Michel,
Dr. med. Tim Cordes,
Prof. Dr. med. Markus S. Kupka
Altonaer Straße 59
20357 Hamburg
T: 040-306836-0, F: 040-306836-69
info@ivf-hamburg.de
www.ivf-hamburg.de

Kinderwunsch Praxisklinik Fleetinsel Hamburg
Tip/Dr. univ. Ist. Semsettin E. Koçak,
Dr. med. Peter List, Cemile Ballnus,
Dr. rer. nat. Uwe Weidner
Admiralitätsstraße 4
20459 Hamburg
T: 040-38605553, F: 040-38605551
kocak@kinderwunschzentrum-hamburg.de
www.kinderwunschzentrum-hamburg.de

MVZ Endokrinologikum Hamburg – Zentrum
für Hormon- und Stoffwechselerkrankungen,
Reproduktionsmedizin und Pränatale Medizin
Prof. Dr. med. Christoph Keck,
PD Dr. med. Michael Graf,
PD Dr. med. Ulrich A. Knuth,
Dr. med. Mandana Motamedi,
Dr. med. Tina Osterholz-Zaleski,
Dr. med. Raquel Pozo Ugarte,
PD. Dr. med. Sabine Segerer,
Dr. med. Nina Wegmann,
Dr. rer. nat. Birthe Nitz, Nicole Becker
Lornsenstraße 4 - 6
22767 Hamburg
T: 040-30628200, F: 040-30628349
gyninfo@endokrinologikum.com
www.endokrinologikum.com

Universitäres Kinderwunschzentrum Lübeck
Ambulanzzentrum des UKSH gGmbH
Prof. Dr. med. Georg Griesinger M. Sc.,
PD Dr. med. Askan Schultze-Mosgau
Ratzeburger Allee 111 - 125
23562 Lübeck
T: 0451-505-778-10, F: 0451-505-778-299
kinderwunsch@uk-sh.de
www.kinderwunsch-luebeck.de

fertilitycenterkiel
Dr. med. Martin Völckers,
Dr. med. Julia Schlütter
Prüner Gang 15
24103 Kiel
T: 0431-9741333, F: 0431-9741322
info@fertilitycenter.de
www.fertilitycenter.de

Kinderwunschzentrum im Universitäts-
Klinikum Schleswig-Holstein
Campus Kiel
Prof. Dr. med. Liselotte Mettler, Dr. med.
Andreas Schmutzler
Arnold-Heller-Straße 3
Haus 24
24105 Kiel
T: 0431-5972083, F: 0431-5975352
repromed@email.uni-kiel.de
www.kinderwunschunikiel.de

KinderwunschKiel
Dr. med. Kurt Brandenburg,
Dr. med. Angela Carstensen
Im Brauereiviertel 5
24118 Kiel
T: 0431-553433, F: 0431-5192745
info@kinderwunschkiel.de
www.kinderwunschkiel.de

Tagesklinik Oldenburg – Zentrum für Kinder-
wunschbehandlung
Dr. med. Jörg Hennefründ,
Dr. med. Heike Boppert,
Dr. med. Michael Heeder
Achternstraße 21
26122 Oldenburg
T: 0441-922700, F: 0441-9227028
info@tagesklinik-oldenburg.de
www.tagesklinik-oldenburg.de

Team Kinderwunsch Oldenburg
Dr. med. Saif Jibril, Dr. med. Gerhard Pohlig
Leo-Trepp-Straße 5
26121 Oldenburg
T: 0441-2489091, F: 0441-2480611
tko@telemed.de
www.teamkinderwunsch.de

Kinderwunschzentrum Ostfriesland
Dr. med. Grita Hasselbach,
Dr. rer. nat. Isabell Motsch
Hafenstraße 6 d
26789 Leer (Ostfriesland)
T: 0491-45425-0, F: 0491-45425-10
info@kinderwunschostfriesland.de
www.kinderwunschostfriesland.de

Kinderwunsch Bremen
Dr. med. Achim von Stutterheim,
Tanja Finger, Dr. med. Anjarasoa Jung
Emmastraße 220
28213 Bremen
T: 0421-224910, F: 0421-2249122
info@kinderwunschbremen.de
www.kinderwunschbremen.de

BZF-Bremer Zentrum für Fortpflanzungsmedizin
Dr. med. Olaf Drost,
Prof. Dr. med. Ernst Heinrich Schmidt,
Dr. sc. hum. Martin Pinteric
Gröpelinger Heerstraße 406 - 408
28239 Bremen
T: 0421-6102-1212, F: 0421-6102-1213
info@icsi.de
www.icsi.de

Team Kinderwunsch Hannover
Dr. med. Nabil Saymé, Dipl.-Biol.T. Krebs
Brühlstraße 19
30169 Hannover
T: 0511-313095, F: 0511-313096
info@team-kinderwunsch-hannover.de
www.team-kinderwunsch-hannover.de

Medizinische Hochschule Hannover
Bereich Gynäkologische Endokrinologie und
Reproduktionsmedizin, OE 6410
OÄ Dr. med. Cordula Schippert,
OA Dr. med. Guillermo-José Garcia-Rocha,
FÄ PD Dr. Frauke von Versen-Höyneck
Carl-Neuberg-Straße 1
30625 Hannover
T: 0511-532-6099, F: 0511-532-6094
Schippert.Cordula@mh-hannover.de
www.mh-hannover.de/11327.html

Kinderwunschzentrum Langenhagen &
Wolfsburg MVZ
Ärztlicher Leiter: Dr. med. Thilo Schill
Ostpassage 9
30853 Langenhagen
Sauerbruchstraße 7
38440 Wolfsburg
T: 0511-972300, F: 0511-9723018
praxis@kinderwunsch-langenhagen.de
www.kinderwunsch-langenhagen.de

Zentrum für Reproduktionsmedizin und Humangenetik
Dr. med. Franz-J. Algermissen,
Dr. med. Peter F. Justus, Dr. med. Georg Wilke,
Dr. med. Notker Graf
Gartenstraße 18 - 20
31141 Hildesheim
T: 05121-20679-0, F: 05121-20679-11
praxis@kinderwunsch-hildesheim.de
www.kinderwunsch-hildesheim.de

Zentrum für Kinderwunschbehandlung und pränatale Medizin
Dr. med. Dipl.-Biochem. Onno Buurman, Dr. med. Michael Dumschat,
Dr. med. Ralf Menkhaus
Simeonsplatz 17
32423 Minden
T: 0571-972600, F: 0571-9726099
info@kinderwunsch-minden.net
buurman@kinderwunsch-minden.net
www.kinderwunsch.net

Praxisklinik Prof. Volz
Prof. Dr. med. Joachim Volz,
PD Dr. med. Stefanie Volz-Köster
Adenauer Platz 7
33602 Bielefeld
T: 0521-9883060, F: 0521-98830622
kinderwunsch@frog.de.com
www.frog.de.com

Bielefeld Fertility-Center – Zentrum für Reproduktionsmedizin und Gynäkologische Endokrinologie
Paul A. Ebert, Dr. med. Karl Völklein,
Beata Szypajlo, Dr. med. Wiebke Rübberdt,
Dr. med. Beate Harms
Werther Straße 266
33619 Bielefeld
T: 0521-101005, F: 0521-101079
praxis@kinderwunsch-bielefeld.de
www.kinderwunsch-bielefeld.de

MVZ für Reproduktionsmedizin am Klinikum Kassel
Dr. med. Marc Janos Willi,
Dr. med. Oswald Schmidt,
Prof. Dr. (UBsAs) Miguel J. Hinrichsen
Mönchebergstraße 41 - 43
34125 Kassel
T: 0561-980-2980, F: 0561-9802981
info@kinderwunsch-kassel.de
www.kinderwunsch-kassel.de

RepKo - Reproduktionsmedizinisches Kompetenzzentrum am Universitätsklinikum Gießen & Marburg GmbH
Prof. Dr. med. Peyman Hadji,
Dr. med. Volker Ziller,
Dr. med. Berna Seker-Pektas,
Dr. med. Cennet Dalimis,
Dr. med. Yasemin Üsküdar
Baldingerstraße
35043 Marburg
T: 06421-58-61330, F: 06421-5867070
Klinikstraße 33
35392 Gießen
T: 0641-98545207, F: 0641-98557099
www.repko-ukgm.de

Kinderwunschzentrum Mittelhessen
Dr. med. Amir Hajimohammad, Berthold Oels
Sportparkstraße 9
35578 Wetzlar
T: 06441-2002020, F: 06441-20020299
info@ivf-mh.de
www.ivf-mh.de

gyn-medicum Göttingen
Dr. med. Monica Tobler, Jana Rostek
Waldweg 5
37073 Göttingen
T: 0551-41337, F: 0551-41722
info@kinderwunsch-praxis-goettingen.de
www.kinderwunsch-praxis-goettingen.de

Kinderwunschzentrum Göttingen
Dr. med. Rüdiger Moltrecht,
Dr. med. Sabine Hübner,
Dr. med. Thomas Welcker,
Dr. rer. nat. Stephanie Mittmann,
Dr. med. Peter Schulzeck,
Dr. med. Filiz Sakin-Kaindl
Kasseler Landstraße 25 a
37081 Göttingen
T: 0551-99888-0, F: 0551-99888-99
info@kiwu-goettingen.de
www.kiwu-goettingen.de

Kinderwunschzentrum Magdeburg
Dr. med. Ingrid Nickel, Dr. med. Evelyn Richter,
Dipl. Biol. Katrin Pribbernow
Ulrichplatz 1
39104 Magdeburg
T: 0391-662489-0, F: 0391-662489-29
info@kiwumed.de
www.kinderwunschzentrum-magdeburg.de

Otto-von Guericke-Universität Magdeburg
Klinik für Reproduktionsmedizin
Prof. Dr. med. Jürgen Kleinstein,
Dr. med. Anke Britta Brössner
Gerhart-Hauptmann-Straße 35
39108 Magdeburg
T: 0391-6717390, F: 0391-6717389
juergen.kleinstein@med.ovgu.de
www.med.uni-magdeburg.de/krep.html

Kinderwunsch-Kö
Dr. med. Martina Behler, Tanja Emde
Königsallee 63 - 65
40215 Düsseldorf
T: 0211-3113550, F: 0211-31135522
info@kinderwunsch-koe.de
www.kinderwunsch-koe.de

Interdisziplinäres Kinderwunschzentrum Düsseldorf MVZ GmbH
Dr. med. M.C.W. Scholtes,
Dipl. med. Kersten Marx,
PD Dr. med. Stefan Kißler,
Dr. med. Petra Hubert,
Dr. med. Selma Yildirim-Assaf
Völklinger Straße 4
40219 Düsseldorf
T: 0211-90197-0, F: 0211-9019750
info@ivf-duesseldorf.de
www.kids4nrw.de

UnikID – Universitäres interdisziplinäres Kinderwunschzentrum Düsseldorf
Prof. Dr. med. Jan-Steffen Krüssel,
Dr. med. Nina Bachmann,
Dr. med. Daniel Fehr, M.Sc.,
Dr. med. Tanja Freundl-Schütt,
PD Dr. med. Alexandra Hess,
Dr. med. Barbara Mikat-Drozdzyński,
Dr. med. Andrea Schanz, Sonja Schu,
Dr. rer. nat. Jens Hirchenhain,
Dr. rer. nat. Dunja M. Baston-Büst
Moorenstraße 5
40225 Düsseldorf
T: 0211-8104060, F: 0211-811-6787
info@unikid.de
www.unikid.de

pro-Kindwunsch – Kinderwunschzentrum Niederrhein
Dr. med. Georg M. Döhmen,
Dr. med. Thomas Schalk
Von-Groote-Straße 175
41066 Mönchengladbach
T: 02161-49686-0, F: 02161-49686-19
info@pro-kindwunsch.de
www.pro-kindwunsch.de

green-ivf – Grevenbroicher Endokrinologikum & IVF-Zentrum
Dr. med. Jürgen Tigges, Dr. med. Kerstin Friol,
PD Dr. med. Christian Gnoth
Rheydter Straße 143
41515 Grevenbroich
T: 02181-4915-13, F: 02181-4915-34
praxis@green-ivf.de
www.green-ivf.de

Bergisches Kinderwunschzentrum Remscheid
Dr. med. Johannes Luckhaus,
Dr. med. Anke Beerkotte
Elberfelder Straße 49
42853 Remscheid
T: 02191-79192-0, F: 02191-79192-39
mail@kinderwunsch-remscheid.de
www.kinderwunsch-remscheid.de

Überörtliche Berufsausübungsgemeinschaft der Kinderwunschzentren Dortmund, Siegen, Dorsten GbR
Prof. Dr. med. Stefan Dieterle,
Dr. med. Andreas Neuer,
Prof. Dr. med. Robert Greb,
Dr. med. Katharina Möller-Morlang,
Dr. med. Thomas von Ostrowski
Olpe 19
44135 Dortmund
T: 0231-557545-0, F: 0231-55754599
Hermelsbacher Weg 41
57072 Siegen
T: 0271-7701810, F: 0271-77018129
Südwall 15
46282 Dorsten
T: 02362-27001, F: 02362-27002
info@kinderwunschzentrum.org
www.kinderwunschzentrum.org

novum – Zentrum für Reproduktionsmedizin
Essen - Duisburg
Prof. Dr. med. Thomas Katzorke,
Dr. med. Susanne Wohlers, Najib N. R. Nassar,
Dr. med. Sylvia Bartnitzki,
Prof. Dr. med. Peter Bielfeld
Akazienallee 8 - 12
45127 Essen
T: 0201-29429-0, F: 0201-29429-14
Ärzteforum in der Tonhallenpassage
Friedrich-Wilhelm-Straße 71
47051 Duisburg
T: 0203-713958-0, F: 0203-713958-15
info@ivfzentrum.de
www.ivfzentrum.de

REProVita - Kinderwunschzentrum Recklinghausen
Dr. med. Cordula Pitone
Hertener Straße 29
45657 Recklinghausen
T: 02361-904188-0, F: 02361-904188-41
info@reprovita.de
www.reprovita.de

Kinderwunschpraxis Gelsenkirchen
Dr. med. Ute Czeromin,
Dr. med. Ina Walter-Göbel,
Dr. med. Kathrin Fißeler
Munscheidstraße 14
45886 Gelsenkirchen
T: 0209-167-1470, F: 0209-167-1471
info@kinderwunsch-gelsenkirchen.de
www.kinderwunsch-gelsenkirchen.de

FCM Fertility Center Münsterland
Dr. med. Ulrich Hilland
Crispinusstraße 12
(am Europaplatz)
46399 Bocholt
T: 02871-23943-43, F: 02871-23943-44
praxis@fcm-net.de
www.fcm-net.de

MVZ Kinderwunsch- und Hormonzentrum
Münster GmbH
Dr. med. Dr. rer. nat. Lutz Belkien,
Dr. med. Caroline Niehoff,
Prof. Dr. med. Axel Kamischke
Hötteweg 5 - 7
48143 Münster
T: 0251-48267-0, F: 0251-48267-77
info@ivf-muenster.de
www.kinderwunschtherapie.de

Kinderwunschpraxis an der Promenade
Mempel & Stratmann
Dr. med. Andrea Mempel, Susanne Stratmann,
Dr. rer. nat. Melanie Rickert-Föhring
Von-Vincke-Straße 14
48143 Münster
T: 0251-414312-0, F: 0251-414312-20
willkommen@kinderwunsch-promenade.de
www.kinderwunsch-promenade.de

UKM Kinderwunschzentrum
Universitätsklinikum Münster
PD Dr. med. Andreas Schüring, Leiter
Kinderwunschzentrum, Gynäkologische
Endokrinologie und Reproduktionsmedizin,
Klinik für Frauenheilkunde und Geburtshilfe;
Prof. Dr. med. Sabine Kliesch, Chefarztin
Klinische Andrologie; Urologie, Andrologie;
Centrum für Reproduktionsmedizin
Albert-Schweitzer-Campus 1, Gebäude D 11
48149 Münster
T: 0251-8358280, F: 0251-8348267
info-kinderwunsch@ukmuenster.de
www.kinderwunschzentrum.uk-muenster.de

Zentrum für Kinderwunschbehandlung
Osnabrück
Irene Coordes, Dr. med. Manfred Schneider
Rheiner Landstraße 93 - 95
49078 Osnabrück
T: 0541-404500, F: 0541-4045040
info@kinderwunsch123.de
www.kinderwunsch123.de

GMP Frauenheilkunde & Reproduktionsmedizin
Dr. med. Dieter Struller, Dr. med. Christof Etien
Graf-Salm-Straße 10
50181 Bedburg, Erft
T: 02272-7778, F: 02272-7773
info@kinderwunsch-erft.de
www.kinderwunsch-erft.de

MVZ PAN Institut für Endokrinologie und
Reproduktionsmedizin
Dr. med. Stefan Palm, Dr. med. Irene Pütz,
Dr. med. Mirko Dannhof, PD Dr. med. Dolores Foth,
Dipl. Psych. Anika Sauer, Dipl. Psych. Andrea Giles,
Dr. med. Georg Mansmann,
PD Dr. med. Torsten Schmidt,
Prof. Dr. med. Martina Breidenbach,
Dr. med. Sigrid Gerards, Dr. med. Jürgen Laser,
Dipl.-Biol. Claudia Grewenig,
Dr. rer. nat. Maike Warnstedt,
Dr. rer. nat. Bastian Schäferhoff
Zeppelinstraße 1
Neumarkt Galerie
50667 Köln
T: 0221-2776-229, F: 0221-2776-201
repro@pan-klinik.de
www.mvz-pan-institut.de

Kinderwunschzentrum Köln
Dr. med. Markus Merzenich
Schönhauser Straße 3
50968 Köln
T: 0221-340307-0, F: 0221-340307-77
info@kinderwunschzentrum-koeln.de
www.kinderwunschzentrum-koeln.de
und
Kinderwunschzentrum
Eva Schwahn
Schönhauser Straße 3
50968 Köln
T: 0221-3402280, F: 0221-3406017
info@wunschkind-koeln.de
www.wunschkind-koeln.de

Frauenarztpraxis mit Schwerpunkt Gynäkologi-
sche Endokrinologie und Reproduktionsmedizin
Dr. med. Klaus Grunwald
Kasernenstraße 25
52064 Aachen
T: 0241-99774140, F: 0241-99774144
kinderwunsch-aachen@t-online.de
www.kinderwunsch-aachen.de

Universitäts-Frauenklinik für Gynäkologische
Endokrinologie und Reproduktionsmedizin
Medizinische Fakultät der RWTH Aachen
Prof. Dr. med. Joseph Neulen,
Dr. med. Benjamin Rösing
Pauwelsstraße 30
52074 Aachen
T: 0241-8088971, F: 0241-8082518
gyn-endokrinologie@ukaachen.de
www.gyn-endokrinologie.ukaachen.de

Universitätsklinikum Bonn – Gynäkologische
Endokrinologie und Reproduktionsmedizin
Prof. Dr. med. Hans H. van der Ven,
Prof. Dr. med. Katrin van der Ven,
Dr. med. Ulrike Bohlen,
Dr. med. vet. Maria Köster
Sigmund-Freud-Straße 25
53127 Bonn
T: 0228-287-19186, F: 0228-28715795
officerepro@ukb.uni-bonn.de
www.kinderwunsch-uni-bonn.de

Praxisklinik für Gynäkologische Endokrinologie
und Reproduktionsmedizin
PD Dr. Dr. med. Gernot Paul Prietl,
Dr. med. Monika Prietl,
Dr. med. Peter Henschen
Theaterplatz 18
53177 Bonn-Bad Godesberg
T: 0228-3503910, F: 0228-364892
ivf@careme.de

Kinderwunsch Praxisklinik Trier
Dr. med. Mohsen Satari,
Prof. Dr. med. Jürgen P. Hanker
Wissenschaftspark (WIP)
Max-Planck-Straße 15
54296 Trier
T: 0651-97906-0, F: 0651-97906-20
info@kinderwunsch-trier.de
www.kinderwunsch-trier.de

Kinderwunsch Zentrum Mainz
Dr. med. Robert Emig, Dr. med. Silke Mettlin,
Prof. Dr. med. Thomas Steck
Fort Malakoff Park
Rheinstraße 4
55116 Mainz
T: 06131-603020, F: 06131-6030210
dr.emig@kwz-mz.de
www.kinderwunschzentrum-mainz.de

Kinderwunschzentrum der Universitätsmedizin
Mainz
Univ.-Prof. Dr. Rudolf Seufert M. Sc.,
Dr. Ruth Gomez, Dr. Ch. Haidner
Langenbeckstraße 1
55101 Mainz
T: 06131-173929, F:
kinderwunsch@frauen.klinik.uni-mainz.de
www.wunschkind-mainz.de

Kinderwunschzentrum Mittelrhein
Dr. med. Josef Beran, Dr. med. Birgit Müller,
Dr. med. Sebastian Hagelauer
Marktstraße 83
56564 Neuwied
Neustadt 8
56068 Koblenz
T: 02631-3968-0, F: 02631-3968-29
info@kinderwunsch-mittelrhein.de
www.kinderwunsch-mittelrhein.de

Zentrum für Reproduktionsmedizin
Prof. Dr. med. Dr. med. habil. Ernst
Siebzehnrübl, Dr. med. Anja Weidner
Hanauer Landstraße 328 - 330
60314 Frankfurt am Main
T: 069-4260770, F: 069-42607710
anmeldung@ivf-ffm.de
www.ivf-ffm.de

Kinderwunschzentrum Frankfurt
Prof. Dr. med. Prof. h. c. Eberhard Merz,
Dr. med. Christine Molitor,
Dr. med. Marie-Theres Swayzer,
Ines Böhnisch, Dr. Claas Mehnert
Steinbacher Hohl 2 - 26
60488 Frankfurt am Main
T: 069-7601-3611, F: 069-76013321
info@kinderwunschzentrum-frankfurt.de
www.kinderwunschzentrumfrankfurt.de

Fertilitätszentrum und Gynäkologische
Endokrinologie – Klinik für Frauenheilkunde
und Geburtshilfe
Goethe-Universität
Dr. med. Nicole Sängler, Dr. med. Annette
Bachmann, Dr. Anna Michaelis
Theodor-Stern-Kai 7
60590 Frankfurt am Main
T: 069-6301-5708, F: 069-6301-7120
info.ivf@kgu.de
www.kgu.de/zfg/gyn

Kinderwunsch- und Endometriosezentrum am
Büsing Park
Dr. med. Konstantin Manolopoulos, Dr. med.
Birgit Lühr, L. Fökel, L. Tsiflika
Herrnstraße 51
63065 Offenbach
T: 069-80907571, F: 069-80907573
info@offenbach-kinderwunsch.de
www.offenbach-kinderwunsch.de

Kinderwunschzentrum Darmstadt
Prof. Dr. med. Gerhard Leyendecker, Dr. med.
Aysen Bilgicyildirim, Dr. med. Matthias Inacker
Bratustraße 9
64293 Darmstadt
T: 06151-50098-0, F: 06151-50098500
info@kwz-da.de
www.kinderwunschzentrum-da.de

MVZ Kinderwunschzentrum Wiesbaden GmbH
Dr. med. Martin Schorsch, Dr. med. Thomas
Hahn, Dr. med. Geza Adasz, Karin Schilberz,
Dr. med. Michael Amrani
Mainzer Straße 98 - 102
65189 Wiesbaden
T: 0611-976320, F: 0611-9763210
info@kinderwunschzentrum-wiesbaden.de
www.kinderwunschzentrum-wiesbaden.de

Kinderwunsch-Praxis IVF-Saar Saarbrücken-
Kaiserslautern
Dr. med. Lars Happel, Andreas Giebel,
Dr. med. Sascha Tauchert,
Dr. med. Anette Russu, Dr. med. Marika Otte,
Dr. rer. medic. Martin Greuner
Europaallee 15
66113 Saarbrücken
T: 0681-93632-0, F: 0681-93632-10
Maxstraße 13
67659 Kaiserslautern
T: 0631-70431, F: 0631-78568
zentrum@ivf-saar.de
www.ivf-saar.de

Klinik für Frauenheilkunde, Geburtshilfe und
Reproduktionsmedizin – Universitätskliniken
des Saarlandes
Prof. Dr. med. E.-F. Solomayer,
OA P. Rosenbaum,
Prof. Dr. Dr. ME Hammadeh,
Dr. med. Kathrin Abel,
Dr. med. Daniel Benndorf,
Dr. med. Peter Jankowski,
Dr. med. Simona Moga
Kirrbergstraße 1
66421 Homburg
T: 06841-1628213, F: 06841-1628061
ivf@uks.eu
www.uniklinikum-saarland.de/einrichtungen/
kliniken_institute/frauenklinik/

Kinderwunschzentrum Ludwigshafen
Dr. med. Tobias Schmidt,
Dr. med. Elena Hartschuh,
Dr. med. Claudia Schmidt,
Dr. rer. nat. Nicole Hirschmann
Ludwigstraße 54 b
67059 Ludwigshafen
T: 0621-59298688, F: 0621-59298690
kontakt@kinderwunsch-lu.de
www.kinderwunschzentrum-ludwigshafen.de

Kinderwunschzentrum – der Universitätsmedi-
zin Mannheim
Prof. Dr. med. Marc Sütterlin,
Dr. med. Regine Schaffelder,
Dr. med. Julia Rehnitz,
Dr. med. Jade Mayer,
Dr. sc. hum. Monika Gentili
Theodor-Kutzer-Ufer 1 - 3
68167 Mannheim
T: 0621-383-3638, F: 0621-383-3814
ivflabor@umm.de
www.umm.de/64.0.html

Viernheimer Institut für Fertilität
PD Dr. med. S. Volz-Köster, Dr. med. C. Nell
Walter-Gropius-Allee 2
68519 Viernheim
T: 06204-918290, F: 06204-9182910
info@vif-kinderwunsch.de
www.vif-kinderwunsch.de

Kinderwunschzentrum Heidelberg
Dr. med. Waltraud Parta-Kehry,
Dr. sc. hum. Suat Parta,
Friederike Tesarz, Dr. med. Daniela Seehaus,
Dr. med. Christina Thöne, Dr. B. Hauff
Römerstraße 3
69115 Heidelberg
T: 06221-89300-0, F: 06221-89300-20
info@kwz-hd.de
www.kwz-hd.de

Abt. für Gynäkologische Endokrinologie und
Fertilitätsstörungen – Universitätsklinikum
Heidelberg
Prof. Dr. med. Thomas Strowitzki,
Prof. Dr. Bettina Toth,
PD Dr. med. Ariane Germeyer,
Dr. med. Sabine Rösner, Dr. med. Julia Rehnitz,
Dr. med. Verena Holschbach,
Dr. rer.nat. Inge Eberhardt,
Dr. rer. nat. Jens Dietrich
Im Neuenheimer Feld 440
69120 Heidelberg
T: 06221-567910, F: 06221-564099
thomas.strowitzki@med.uni-heidelberg.de
www.klinikum.uni-heidelberg.de/
Kinderwunschambulanz.583.0.html

Kinderwunsch-Zentrum Stuttgart
Prof. Dr. med. Dieter H. A. Maas,
Dr. med. Friedrich Gagsteiger,
Dr. med. Klaus Bühler, Dr. med. Nina Kircher,
Dr. med. Lisa Beiglböck, Dr. med. Gerhild Weiß
Friedrichstraße 45
70174 Stuttgart
T: 0711-997806-0, F: 0711-997806-10
info@kwz-stuttgart.de
www.kidz-stuttgart.de

Kinderwunsch-Zentrum-Stuttgart, Praxis Villa Haag
Dr. med. Dieter B. Mayer-Eichberger
Herdweg 69
70174 Stuttgart
T: 0711-221084, F: 0711-221085
info@kinderwunschpraxis.de
www.kinderwunschpraxis.de

Frauenarztpraxis mit Tagesklinik Reproduktions-
medizin
Univ.-Prof. Dr. med. Ute Fuchs,
Dr. rer. nat. Silvia Harrer
Kornbergstraße 23
70176 Stuttgart
T: 0711-2262728, F: 0711-2262738
Prof.UteFuchs@t-online.de
www.kinder-wunsch-bw.de

Kinderwunschzentrum Ludwigsburg
Dr. med. Andreas Ott,
Dr. med. Annette Schmid,
Dr. med. Katja Becker
Pflugfelder Straße 22
71636 Ludwigsburg
T: 07141-688760, F: 07141-688769
info@kiwu-lb.de
www.kinderwunschzentrum-ludwigsburg.com

KinderwunschPraxis Dres. Göhring
Dr. med. Ulrich Göhring,
Dr. med. Inés Göhring
Hagellocher Weg 63
72070 Tübingen
T: 07071-94663-0, F: 07071-94663-99
goehring@kinderwunschpraxis.com
www.kinderwunschpraxis.com

IVF-Zentrum der Universitäts-Frauenklinik
Tübingen
Dr. med. Melanie Henes, Dr. Philippe Cleidon
Calwerstraße 7
72076 Tübingen
T: 07071-2983117, F: 07071-292250
melanie.henes@med.uni-tuebingen.de
www.uni-frauenklinik-tuebingen.de

Kinderwunschzentrum Aalen
Dr. med. Rainer Rau, Dr. med. Birgit Schröppel,
Dr. rer. nat. Roland Eid
Weidenfelder Straße 1
73430 Aalen
T: 07361-62021, F: 07361-62026
info@kinderwunsch-aalen.de
www.kinderwunsch-aalen.de

IVF-Zentrum Esslingen
Praxis Dr. J. E. Costea
Dr. med. Johann Emil Costea,
Dipl.-Ing. Luminitza Costea,
Dr. rer. nat. Michael Troge
Martinstraße 15
73728 Esslingen
T: 0711-31059160, F: 0711-31059161
info@ivf-praxis.com
www.ivf-praxis.com

Centrum für Kinderwunsch Pforzheim
Verena Peuten
Zerrenner Straße 22 - 24
75172 Pforzheim
T: 07231-2808280, F: 07231-28082888
info@kinderwunsch-pforzheim.de
www.kinderwunsch-pforzheim.de

Kinderwunschzentrum Karlsruhe
Karlsruher IVF-Programm
Arbeitsgemeinschaft für Fortpflanzungsmedizin
Hans-Jürgen Gräber, Dr. med. Daniela Plathow,
Dr. Frank Tetens, Laborärzte Dr. Ehrfeld + Kollegen,
Humangenetik Dr. Schlüter
Waldstraße 2
76133 Karlsruhe
T: 0721- 8246700, F: 0721-82467090
info@ivf-programm.de
www.ivf-programm.de

Kinderwunsch Bodensee
Dr. med. Andreas Heine, Dr. med. Antje
Hiemer, Dr. Angela Panhans
Maggistraße 5
78224 Singen
T: 07731-912999-0, F: 07731-912999-99
info@endlichnachwuchs.de
www.endlichnachwuchs.de

Centrum für gynäkologische Endokrinologie
und Reproduktionsmedizin Freiburg (CERF)
Dr. med. Rudolf Weitzell,
Dr. med. Maria Thiemann,
PD Dr. med. Birgit Wetzka,
Prof. Dr. med. Franz Geisthövel
Bismarckallee 7 f
79098 Freiburg
T: 0761-20743-0, F: 0761-32111
info@kinderwunsch-hormone.de
www.kinderwunsch-hormone.de

Universitätsklinikum Freiburg – Klinik für Endo-
krinologie und Reproduktionsmedizin
Dr. med. Stephanie Friebe, Dr. med. Aida
Hanjalic-Beck, Dr. Bengi Acar-Perk
Hugstetter Straße 55
79106 Freiburg
T: 0761-270-31500, F: 0761-270-29120
stephanie.friebe@uniklinik-freiburg.de
www.uniklinik-freiburg.de/frauenklinik/live/
endokrinologie.html

Zentrum für Reproduktionsmedizin München
Gemeinschaftspraxis für Frauenheilkunde und
Geburtshilfe
Dr. med. Walter Bollmann,
Dr. med. Thomas Brückner,
Dr. med. Ulrich Noss
Tal 11
80331 München
T: 089-242295-0, F: 089-242295-60
info@ivf-bbn.de
www.ivf-bbn.de

Zentrum für Gynäkologische Endokrinologie
und Reproduktionsmedizin
Klinikum der LMU München – Innenstadt
Prof. Dr. med. Christian J. Thaler,
Prof. Dr. med. Klaus Friese
Maistraße 11
80337 München
T: 089-5160-4214, F: 089-5160-4918
www.kinderwunsch-uni-muenchen.de

Kinderwunsch Zentrum an der Oper
Dr. med. Helmut Lacher, Dr. med. Jörg Puchta,
PD Dr. med. Hans-Ulrich Pauer,
Dr. med. Silke Michna
Maximilianstraße 2 a
80539 München
T: 089-547041-0, F: 089-547041-34
info@hormonzentrum.de
www.hormonzentrum.de

Kinderwunsch Centrum München-Pasing
Dr. med. Klaus Fiedler, Dr. med. Irene von Hertwig,
Dr. med. Gottfried Krüsmann,
Prof. Dr. Dr. med. habil. Wolfgang Würfel,
Ina Laubert, Dr. med. Claudia Santjohanser,
Sabine Völker, Osama Meri,
Dr. med. Jan Krüsmann
Lortzingstraße 26
81241 München
T: 089-244144-0, F: 089-244144-42
info@ivf-muenchen.de
www.ivf-muenchen.de

Hormon- und Kinderwunschzentrum
Klinikum der LMU München – Grosshadern
Prof. Dr. med. Christian J. Thaler,
Dr. rer. nat. Viktoria von Schönfeldt,
Prof. Dr. med. Klaus Friese
Marchioninistraße 15
81377 München
T: 089-70956825, F: 089-70953844
www.kinderwunsch-uni-muenchen.de

Kinderwunsch Centrum Chiemsee
Dr. med. Susann Böhm,
Dr. med. Matthias Lehnert, Johannes Wagner
Hochriesstraße 21
83209 Prien am Chiemsee
T: 08051-5050, F: 08051-63499
info@kinderwunsch-chiemsee.de
www.kinderwunsch-chiemsee.de

IVF-Zentrum Augsburg
GMP Dres. Hiller, Bauer, Kraus, Steinfeld-Birg
Dr. med. Klaus-Friedrich Hiller,
Dr. med. Thomas Bauer,
Dr. med. Harald Kraus,
Dr. med. Dieter Steinfeld-Birg
Prinzregentenstraße 25
86150 Augsburg
T: 0821-502780, F: 0821-5027878
info@ivf-augsburg.de
www.ivf-augsburg.de

Zentrum für Reproduktionsmedizin
am Klinikum Kempten-Oberallgäu
Prof. Dr. med. Ricardo Felberbaum,
Gerhard Allgayer, Dr. med. Claudia Daufratshofer,
Dipl. Biol. Mohammad Kousehlar
Robert-Weixler-Straße 50
87439 Kempten
T: 0831-530-3393, F: 0831-530-3457
ricardo.felberbaum@klinikum-kempten.de
www.kinderwunsch-kempten.de

Universitätsfrauenklinik und Poliklinik Ulm
Zentrum für Reproduktionsmedizin und Gynä-
kologische Endokrinologie
PD Dr. med. Katharina Hancke
Prittwitzstraße 43
89075 Ulm
T: 0731-50058663, F: 0731-50058664
repromed.ufk@uniklinik-ulm.de
www.uni-ulm.de/ivf

Kinderwunsch-Zentrum Ulm
Dr. med. Friedrich Gagsteiger,
Dr. med. Natalie Reeka,
Dr. med. Kerstin Eibner,
Dr. med. Nilofar Huzurudin,
Dr. med. Verena Domschat, Julia Koglin
Einsteinstraße 59
89077 Ulm
T: 0731-151590, F: 0731-1515915
info@kwz-ulm.de
www.kwz-ulm.de

Kinderwunsch und Frauen-Hormon Centrum
Nürnberg
Dr. med. Joachim Neuwinger,
Dr. med. Barbara Munzer-Neuwinger,
Prof. Dr. med. Peter Licht
Agnesgasse 2-4
90403 Nürnberg
T: 0911-2355500, F: 0911-2355516
aerzte@kinderwunschzentrum-nuernberg.de
www.kinderwunschzentrum-nuernberg.de

GMP Dres. Hamori, Behrens, Hammel
Dr. med. Miklos Hamori, Dr. med. Rolf Behrens,
Dr. med. Andreas Hammel
Nürnberger Straße 35
91052 Erlangen
T: 09131-89520, F: 09131-205410
info@ivf-erlangen.de
www.ivf-erlangen.de

Kinderwunschzentrum Erlangen
Dr. med. Jan van Uem,
Dr. med. Madeleine Haas
Michael-Vogel-Straße 1 e
91052 Erlangen
T: 09131-8095-0, F: 09131-809530
info@vanuem.com
www.kinderwunschzentrum-erlangen.de

Universitäts-Fortpflanzungszentrum Franken (UFF)
Prof. Dr. med. Matthias W. Beckmann,
PD Dr. med. Patricia Oppelt,
Prof. Dr. rer. nat. Ralf Dittrich
Universitätsstraße 21 - 23
91054 Erlangen
T: 09131-85-33524, F: 09131-85-33545
fk-uff@uk-erlangen.de
www.reproduktionsmedizin.uk-erlangen.de/

Kinderwunschzentrum Amberg
Am Klinikum St. Marien Amberg
Dr. med. Jürgen Krieg
Mariahilfbergweg 7
92224 Amberg
T: 09621-381519, F: 09621-381941
info@dr-krieg.de
www.kinderwunsch-amberg.de

KITZ Regensburg - KinderwunschTherapie im
Zentrum
Prof. Dr. med. Bernd Seifert,
Dr. med. Claudia Gaßner
Hemauerstraße 1
93047 Regensburg
T: 0941-992577-0, F: 0941-992577-23
info@kitz-regensburg.de
www.kitz-regensburg.de

Kinderwunschzentrum Niederbayern
Dr. med. Hans-Joachim Kroiss,
Dr. med. Samuel Dadze,
Dr. IM Tem. Elfriede Bernhardt
Stadtfeldstraße 50
94469 Deggendorf
T: 0991-29799332, F: 0991-29799331
praxis@ivf-bayern.de
dr.kroiss@ivf-bayern.de
kinderwunsch-niederbayern.de

Klinik am Hofgarten – Kinderwunsch-Zentrum
Bayreuth
Dr. med. Dr. phil. Stefan Todorow,
Dr. med. Erika Schwarz
Richard-Wagner-Straße 34 - 36
95444 Bayreuth
T: 0921-7454440, F: 0921-74544410
info@ivf-bayreuth.de
www.ivf-bayreuth.de

Zentrum für Reproduktionsmedizin,
Medizinische Genetik, Pränataldiagnostik
Dr. med. Reinhard Mai,
Dr. med. Wolfgang Schmitt,
Dr. med. Lore Mulfinger
Juliuspromenade 7
97070 Würzburg
T: 0931-321230, F: 0931-3212377
kontakt@drs-mai-schmitt-mulfinger.de
www.drs-mai-schmitt-mulfinger.de

Universitätsklinikum Würzburg
Frauenklinik und Hebammenschule
Zentrum für gynäkologische Endokrinologie
und Reproduktionsmedizin
Prof. Dr. med. Ursula Zollner, Dr. med. Michael
Schwab, Dr. rer. nat. Claudia Staib
Josef-Schneider-Straße 4
97080 Würzburg
T: 0931-201-25619, F: 0931-201-25406
kinderwunsch@klinik.uni-wuerzburg.de
www.frauenklinik.uni-wuerzburg.de

Without generous support publishing this Annual would not have been possible. Our gratitude goes to

FERRING Arzneimittel GmbH, Kiel
<http://www.ferring.de/>

4,500 EUR



Merck Serono GmbH, Darmstadt
www.merckserono.de

4,500 EUR



MSD Sharp & Dohme GmbH, Haar bei München
<http://www.msd.de/>

4,500 EUR



Journal of Reproductive Medicine and Endocrinology

Publisher

Krause & Pachernegg GmbH
Verlag für Medizin und Wirtschaft
Postfach 21, Mozartgasse 10
A-3003 Gablitz, Austria
phone +43/2231/61 258-0
fax +43/2231/61 258-10
www.kup.at/reproduktionsmedizin

Chief Editor

Prof. Dr. med. Hermann M. Behre
Zentrum für Reproduktionsmedizin und
Andrologie
Universitätsklinikum Halle
Martin-Luther-Universität Halle-Wittenberg
Ernst-Grube-Str. 40
D-06120 Halle, Germany
phone +49/345/557-4782
fax +49/345/557-4788
e-mail: hermann.behre@medizin.uni-halle.de

Official Organ of the Following Scientific Societies

Arbeitsgemeinschaft Reproduktions-
biologie des Menschen (AGRBM)

Bundesverband Reproduktionsmedi-
zinischer Zentren Deutschlands (BRZ)

Dachverband Reproduktionsbiologie
und -medizin (DVR)

Deutsche Gesellschaft für Andrologie
(DGA)

Deutsche Gesellschaft für Gynäkologische
Endokrinologie und Fortpflanzungs-
medizin (DGGEF)

Deutsche Gesellschaft für Reproduktions-
medizin (DGRM)

Deutsches IVF-Register (D-I-R)

Embryologenforum Austria (EFA)

Österreichische Gesellschaft für
Reproduktionsmedizin und Endo-
krinologie (OEGRM)

Sektion Reproduktionsbiologie und
-medizin der Deutschen Gesellschaft
für Endokrinologie (SRBM/DGE)

Editors

Andrology

Prof. Dr. med. Hans-Christian Schuppe
Klinik und Poliklinik für Urologie, Kinder-
urologie und Andrologie
Universitätsklinikum Gießen u. Marburg GmbH
D-35392 Gießen, Germany
e-mail:
hans-christian.schuppe@derma.med.uni-giessen.de

CME/DFP

Dipl. Med. Jens W. Jacobsen
ENDOKRINOLOGIKUM Hamburg, Zentrum
für Hormon- und Stoffwechselerkrankungen,
Reproduktionsmedizin und Pränatale Medizin
D-22767 Hamburg, Germany
e-mail: jens.jacobsen@endokrinologikum.com

Univ.-Doz. Dr. Dietmar Spitzer

IVF-Zentren Prof. Zech
A-5020 Salzburg, Austria
e-mail: d.spitzer@salzburg.ivf.at

Embryology and Molecular Biology

Prof. em. Dr. med. Dr. rer. nat.

Henning M. Beier

Direktor des Instituts für Anatomie und
Reproduktionsbiologie a.D.
Institut für Molekulare und Zelluläre Anatomie
RWTH Aachen
D-52057 Aachen, Germany
e-mail: hmbeier@ukaachen.de

Univ.-Prof. Dr. Gottfried Dohr

Institut für Zellbiologie, Histologie und
Embryologie
Medizinische Universität Graz
A-8010 Graz, Austria
e-mail: gottfried.dohr@medunigraz.at

Endocrinology

Prof. Dr. med. Dr. h. c. mult. Thomas Rabe

Universitäts-Frauenklinik
D-69120 Heidelberg, Germany
e-mail: thomas_rabe@med.uni-heidelberg.de

Prof. Dr. med. Ludwig Wildt

Klinische Abteilung für Gynäkologische
Endokrinologie und Reproduktionsmedizin
Universitäts-Frauenklinik Innsbruck
A-6020 Innsbruck, Austria
e-mail: ludwig.wildt@i-med.ac.at

Ethics and Law

Prof. Dr. med. Franz Geithövel

Centrum für Gynäkologische Endokrinologie
und Reproduktionsmedizin Freiburg (CERF)
D-79098 Freiburg i. Br., Germany
e-mail: geithoewel@t-online.de

Dr. med. Ulrich Hilland

Fertility Center Münsterland
D-46399 Bocholt, Germany
e-mail: praxis@fcm-net.de

Prof. Dr. med. Herbert Zech

Institut für Reproduktionsmedizin und Endo-
krinologie
A-6900 Bregenz, Austria
e-mail: zech@ivf.at

Genetics

PD Dr. med. Tina Buchholz

Zentrum für Polkörperdiagnostik, Praxis für
Gynäkologie und Genetik, Labor für
Reproduktionsgenetik
D-80538 München, Germany
e-mail: info@gyn-gen-lehel.de

Univ.-Prof. Mag. Dr. Markus Hengstschläger

Vorstand des Instituts für Medizinische Genetik
Medizinische Universität Wien
A-1090 Wien, Austria
e-mail:
markus.hengstschlaeger@meduniwien.ac.at

Gynaecology

Prim. Univ.-Prof. Dr. med. Joerg Keckstein

Abteilung für Gynäkologie und Geburtshilfe
Landeskrankenhaus Villach
A-9500 Villach, Austria
e-mail: joerg.keckstein@lkh-vil.or.at

Prof. Dr. med. Michael Ludwig

Facharzt für frauenheilkunde und Geburtshilfe
Gynäkologische Endokrinologie und
Reproduktionsmedizin
amedes

Zentrum für Endokrinologie – Kinderwunsch –
Pränatale Medizin im Barkhof
D-20095 Hamburg, Germany
e-mail: michael.ludwig@amedes-group.com

Prof. Dr. med. Hans Heinrich van der Ven

Abt. für Gynäkologische Endokrinologie und
Reproduktionsmedizin
Zentrum für Geburtshilfe und Frauenheilkunde
Rheinische Friedrich-Wilhelm-Universität
D-53105 Bonn-Venusberg, Germany
e-mail: hans.van_der_ven@ukb.uni-bonn.de

Contraception

Prim. Dr. Hans Concin

Abteilung für Frauenheilkunde und Geburtshilfe
Landeskrankenhaus Bregenz
A-6900 Bregenz, Austria
e-mail: hans.concin@lkhb.at

Prof. Dr. med. Dr. h. c. mult. Thomas Rabe

Universitäts-Frauenklinik
D-69120 Heidelberg, Germany
e-mail: thomas_rabe@med.uni-heidelberg.de

Psychosomatic Medicine

Prof. Dr. med. Heribert Kentenich

Fertility Center Berlin
D-14050 Berlin, Germany
e-mail: kentenich@fertilitycenterberlin.de

PD Dipl.-Psych. Dr. sc. hum. Tewes Wischmann

Universitätsklinikum Heidelberg
D-69115 Heidelberg, Germany
e-mail:
tewes.wischmann@med.uni-heidelberg.de

Reproductive Medicine

Dr. Klaus Bühler

Vorsitzender Deutsches IVF-Register e. V. –
D-I-R
Kinderwunsch-Zentrum Ulm & Stuttgart
D-70174 Stuttgart, Germany
e-mail: buehler@ivf-zentrum.de
buehler.kf@t-online.de

Prof. Dr. med. Wolfgang Urdl

Universitätsklinik für Frauenheilkunde Graz
A-8010 Graz, Austria
e-mail: wolfgang.urdl@ivf-institut.at

Prof. Dr. Dr. med. Wolfgang Würfel

Kinderwunsch Centrum München (KCM)
D-81241 München, Germany
e-mail: info@ivf-muenchen.de

Urology

Prof. Dr. med. Sabine Kliesch

Centrum für Reproduktionsmedizin und
Andrologie, Klinische Andrologie
Universitätsklinikum Münster
D-48149 Münster, Germany
e-mail: sabine.kliesch@ukmuenster.de

Imprint

Official Organ of Following Scientific Societies:

- Arbeitsgemeinschaft Reproduktionsbiologie des Menschen (AGRBM) • Bundesverband Reproduktionsmedizinischer Zentren Deutschlands (BRZ) • Dachverband Reproduktionsbiologie und -medizin (DVR) • Deutsche Gesellschaft für Andrologie (DGA) • Deutsche Gesellschaft für Gynäkologische Endokrinologie und Fortpflanzungsmedizin (DGGEF) • Deutsche Gesellschaft für Reproduktionsmedizin (DGRM) • Deutsches IVF-Register (D-I-R) • Embryologenforum Austria (EFA) • Österreichische Gesellschaft für Reproduktionsmedizin und Endokrinologie (OEGRM) • Sektion Reproduktionsbiologie und -medizin der Deutschen Gesellschaft für Endokrinologie (SRBM/DGE)

Chief Editor:

Prof. Dr. med. Hermann M. Behre
Zentrum für Reproduktionsmedizin und Andrologie
Universitätsklinikum Halle
Martin-Luther-Universität Halle-Wittenberg
Ernst-Grube-Str. 40, D-06120 Halle, Germany
phone +49/345/557-4782, fax +49/345/557-4788
e-mail: hermann.behre@medizin.uni-halle.de

Publisher's Office:

Krause & Pachernegg GmbH
Verlag für Medizin und Wirtschaft
Mozartgasse 10, A-3003 Gablitz, Austria
phone +43/2231/61 258, fax +43/2231/61 258-10
www.kup.at/repromedizin

Layout: a.umi design etc.
Soo-Hee Kim

Printers: Druckerei Bunter Hund
10405 Berlin
Saarbrücker Straße 24C

Deutsche Post: Vertriebskennzeichen
Y 64238

Place of

Publication: A-3003 Gablitz, Austria

Policy: The *Journal of Reproductive Medicine and Endocrinology* welcomes submission of clinically and research oriented reviews in the fields of andrology, embryology, molecular biology, endocrinology, ethics and law, genetics, gynaecology, contraception, psychosomatic medicine, urology etc.

Copyright: All rights reserved. No part of this publication may be reproduced or transmitted in any form or by any means, electronic or mechanic, including photocopy, recording, or any information storage and retrieval system, without written permission from Krause & Pachernegg GmbH.

© 2014 Krause & Pachernegg GmbH

Authors, editors and publisher do not accept responsibility for any loss or damage arising from actions or decisions based on information contained in this publication: ultimate responsibility for the treatment of patients and interpretation of published material lies with the medical practitioner. Statements and opinions expressed in articles herein are those of the authors and not necessarily those of the editors or publisher. Great care is devoted to the compilation of the articles. Even so, however, errors in data processing cannot always be avoided. In view of this and because developments in medical science advance very quickly, it is recommended that the reader conducts his own independent inquiries and/or research as regards the stated diagnostic methods, measurements of medication dosis etc. The editors and publisher disclaim any responsibility or liability for the correctness of such material and do not guarantee, warrant or endorse any product or service advertised in this publication nor do they guarantee any claim made by the manufacturer of such product or service.

Ethical Approval: All original research involving human subjects must be accompanied by evidence of prior ethics committee approval. Authors must supply evidence of informed consent of research participants (patients).

The use of general descriptive names, trade names, trademarks etc. in this publication even if not specifically identified, does not imply that these names are not protected by the relevant laws and regulations.

